

WAAS CH 48909 W21A	APP CRS 209°	Rwy Idg TDZE 948 Apt Elev 948
--	------------------------	---

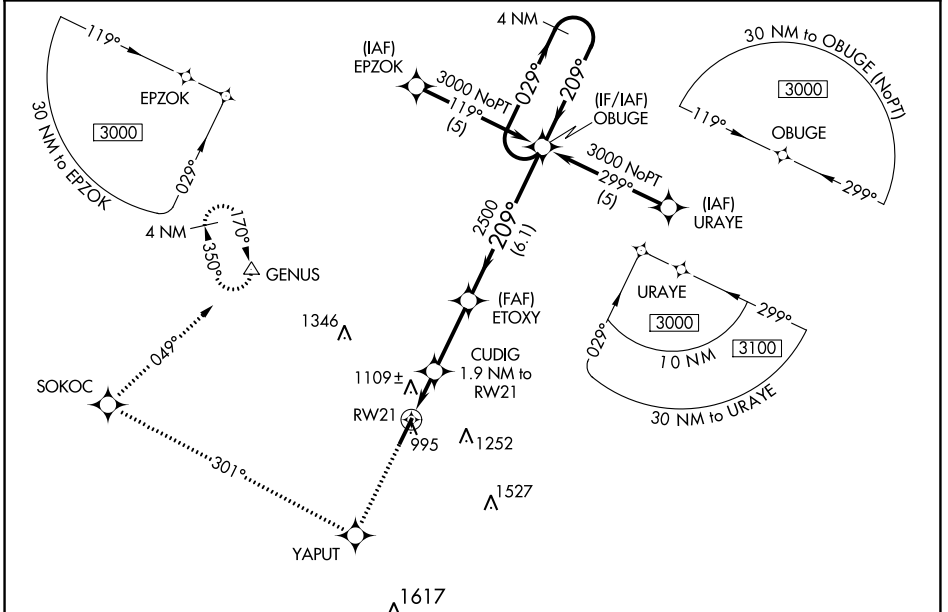
RNAV (GPS) Z RWY 21

GEORGETOWN-SCOTT COUNTY RGNL (27K)

NA For uncompensated Baro-VNAV systems, LNAV/VNAV NA below -16° C (4° F) or above 46° C (114° F). DME/DME RNP-0.3 NA. When local altimeter setting not received, use Lexington altimeter setting and increase LPV DA to 1186, LNAV/VNAV DA to 1460, and all MDA 40 feet; increase LPV all Cats and LNAV Cats C/D and Circling Cat D visibility ¼ SM. Baro-VNAV and VDP NA with Lexington altimeter setting.

MISSED APPROACH: Climb to 3000 direct YAPUT and right turn on track 301° to SOKOC and right turn on track 049° to GENUS and hold.

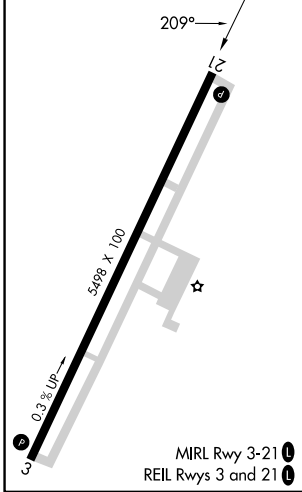
AWOS-3 119,975	LEXINGTON APP CON 120.15 259.3 (040° - 220°) 120.75 298.9 (221° - 039°)	CLNC DEL 127,425	UNICOM 123.0 (CTAF) 1
--------------------------	---	----------------------------	---------------------------------



SE-1, 28 NOV 2024 to 26 DEC 2024

SE-1, 28 NOV 2024 to 26 DEC 2024

ELEV 948	TDZE 948
-----------------	-----------------



3000	YAPUT	SOKOC	GENUS	4 NM Holding Pattern
↑	✧	↻ Ir 301°	↻ Ir 049°	△
<p>*LNAV only.</p> <p>CUDIG 1.9 NM to RW21</p> <p>ETOXY 2500</p> <p>OBUGE</p> <p>3000</p> <p>GP 3.00° TCH 30</p>				
<p>RW21 1.2 NM 0.7 NM 2.8 NM 6.1 NM</p>				
CATEGORY	A	B	C	D
LPV DA	1148-¾ 200 (200-¾)			
LNAV/VNAV DA	1422-1¾ 474 (500-1¾)			
LNAV MDA	1360-1	412 (500-1)	1360-1¾	412 (500-1¾)
CIRCLING	1420-1	472 (500-1)	1560-1¾	1660-2¼
			612 (700-1¾)	712 (800-2¼)