

WAAS CH 86407 W15A	APP CRS 146°	Rwy ldg TDZE 1162 Apt Elev 1165
--	------------------------	---

RNAV (GPS) RWY 15

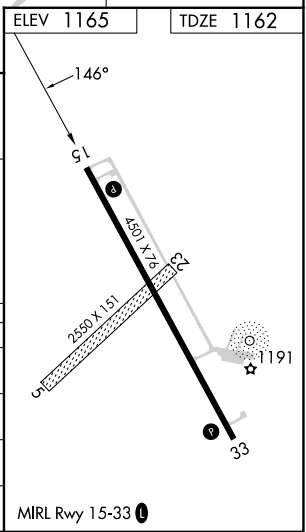
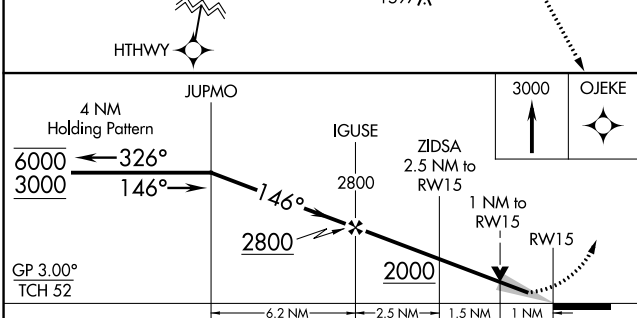
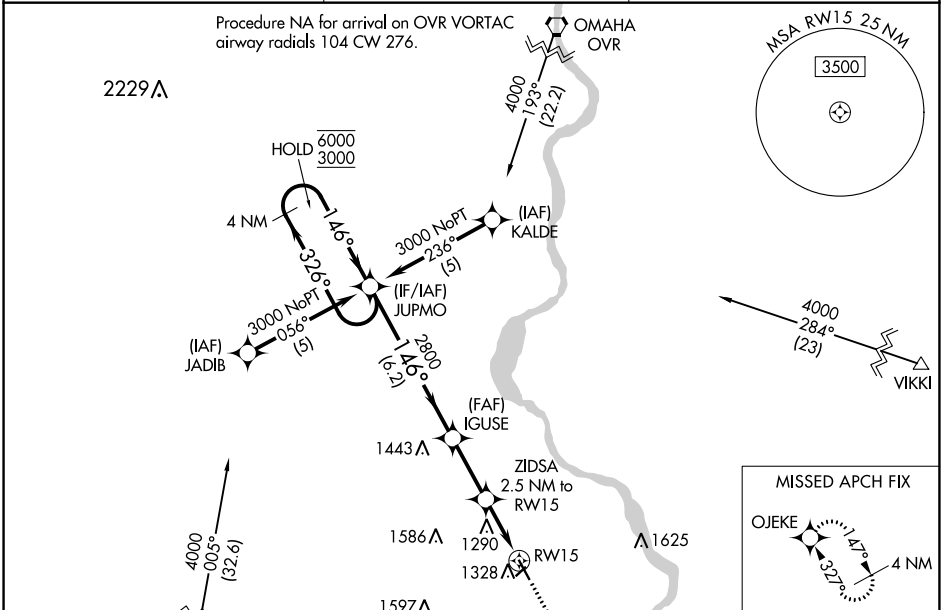
NEBRASKA CITY MUNI (AFK)

RNP APCH - GPS.

⚠ Circling NA to Rws 5 and 23. For uncompensated Baro-VNAV systems, LNAV/VNAV NA below -17°C or above 54°C.

MISSED APPROACH: Climb to 3000 direct OJEKE and hold.

AWOS-3PT 128.325	OMAHA APP CON 120.1 354.05	UNICOM 122.7 (CTAF) 0
----------------------------	--------------------------------------	---------------------------------



CATEGORY	A	B	C	D
LPV DA	1362-1	200 (200-1)		NA
LNAV/VNAV DA	1431-1	269 (300-1)		NA
LNAV MDA	1540-1	378 (400-1)		NA
C CIRCLING	1640-1	475 (500-1)		NA

NC-2, 28 NOV 2024 to 26 DEC 2024

NC-2, 28 NOV 2024 to 26 DEC 2024