

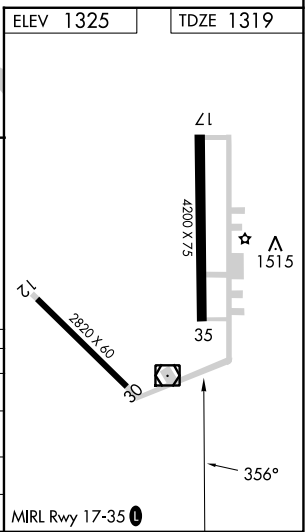
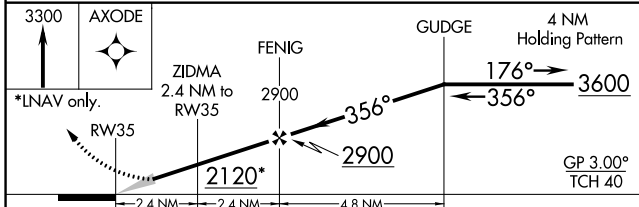
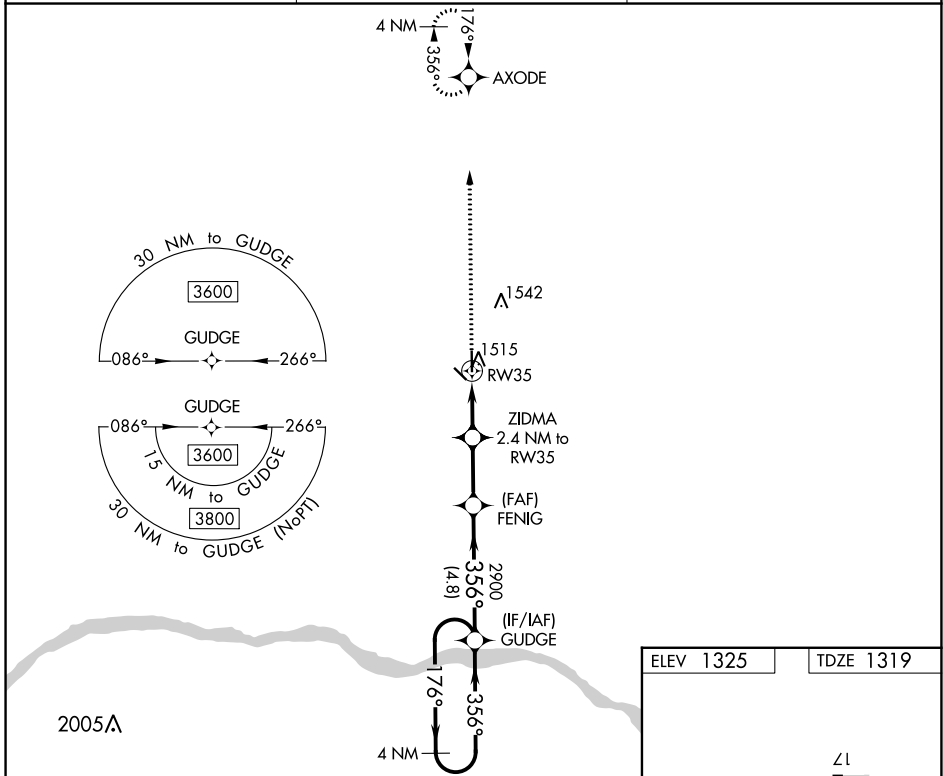
WAAS CH 62934 W35A	APP CRS 356°	Rwy Idg 4200 TDZE 1319 Apt Elev 1325
----------------------------------------	------------------------	-----------------------------------------------------------------

RNAV (GPS) RWY 35

SCRIBNER STATE (SCB)

	DME/DME RNP-0.3 NA. Use Fremont altimeter setting, when not received use Wahoo altimeter setting and increase all DA 24 feet and all MDA 40 feet. Helicopter visibility reduction below 3/4 SM NA. Baro-VNAV NA.	MISSED APPROACH: Climb to 3300 direct AXODE and hold.
	FET AWOS-3 121.275	OMAHA APP CON 120.1 354.05

FET AWOS-3 121.275	OMAHA APP CON 120.1 354.05	CTAF 122.9
------------------------------	--------------------------------------	----------------------



CATEGORY	A	B	C	D
LPV DA	1606-1	287 (300-1)		NA
LNAV/VNAV DA	1744-1½	425 (500-1½)		NA
LNAV MDA	1840-1	521 (600-1)		NA
CIRCLING	1900-1	575 (600-1)		NA

NC-2, 28 NOV 2024 to 26 DEC 2024

NC-2, 28 NOV 2024 to 26 DEC 2024