

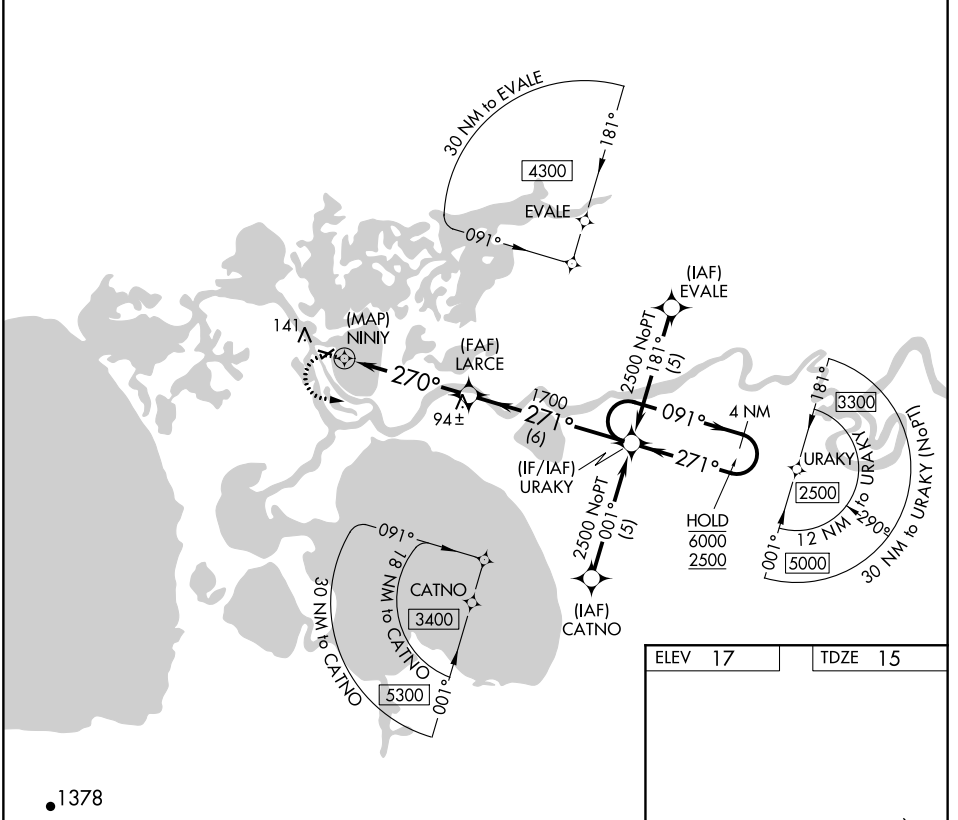
APP CRS <b>270°</b>	Rwy Idg TDZE Apt Elev	<b>2659</b> <b>15</b> <b>17</b>
------------------------	-----------------------------	---------------------------------------

# RNAV (GPS) RWY 27

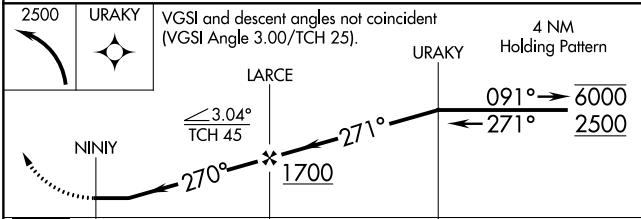
SELAWIK (WLK) (PASK)

RNP APCH.	MISSED APPROACH: Climbing left turn to 2500 direct URAKY and hold.
-----------	--

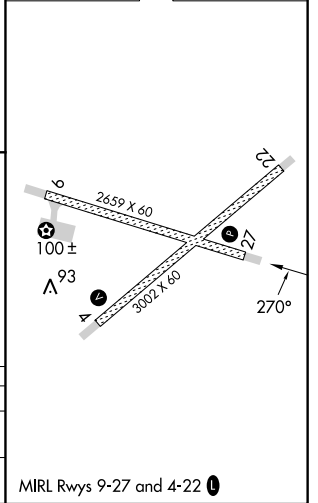
AWOS-3P <b>135.65</b>	ANCHORAGE CENTER <b>119.2 263.0</b>	KOTZEBUE RADIO <b>122.5</b>	CTAF <b>122.7</b>
--------------------------	--	--------------------------------	----------------------



ELEV 17	TDZE 15
---------	---------



CATEGORY	A	B	C	D
RNAV MDA	420-1	405 (500-1)	420-1¼	405 (500-1¼)
CIRCLING	480-1 463 (500-1)	580-1 563 (600-1)	580-1½ 563 (600-1½)	580-2 563 (600-2)



MIRL Rwy 9-27 and 4-22

AK, 31 OCT 2024 to 26 DEC 2024

AK, 31 OCT 2024 to 26 DEC 2024