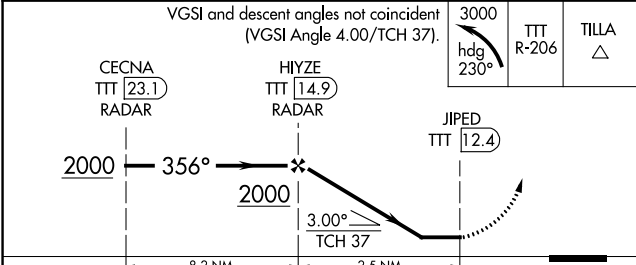
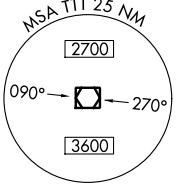
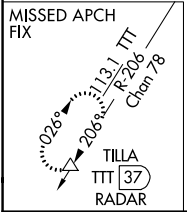
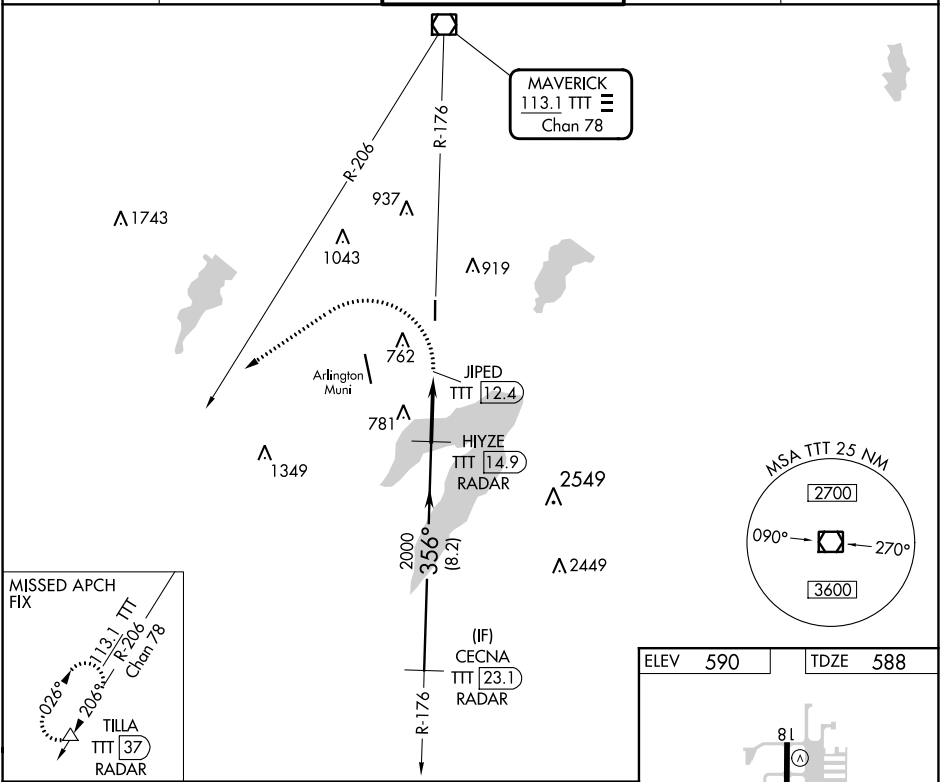


VOR/DME TTT <b>113.1</b> Chan <b>78</b>	APP CRS <b>356°</b>	Rwy Idg <b>4001</b> TDZE <b>588</b> Apt Elev <b>590</b>
---	------------------------	---

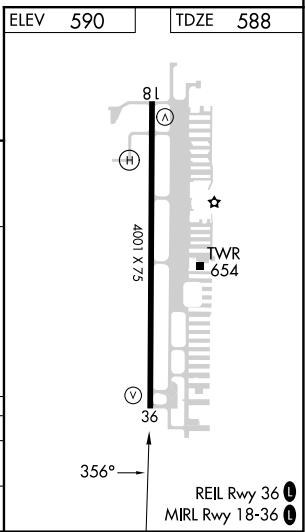
# VOR RWY 36

GRAND PRAIRIE MUNI (GPM)

RADAR and DME required.		MISSED APPROACH: Climbing left turn to 3000 on heading 230° and TTT VOR/DME R-206 to TILLA/37 DME/RADAR and hold.		
Circling Rwy 18 NA at night.		GRAND PRAIRIE TOWER * <b>128.55</b> (CTAF)	GND CON <b>121.15</b>	UNICOM <b>123.075</b>



CATEGORY	A	B	C	D
S-36	1040-2½	452 (500-2½)		NA
CIRCLING	1100-2½ 510 (600-2½)	1280-2½ 690 (700-2½)		NA



SC-2, 28 NOV 2024 to 26 DEC 2024

SC-2, 28 NOV 2024 to 26 DEC 2024