

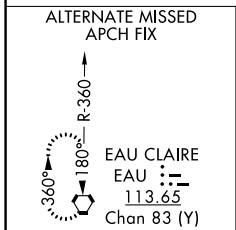
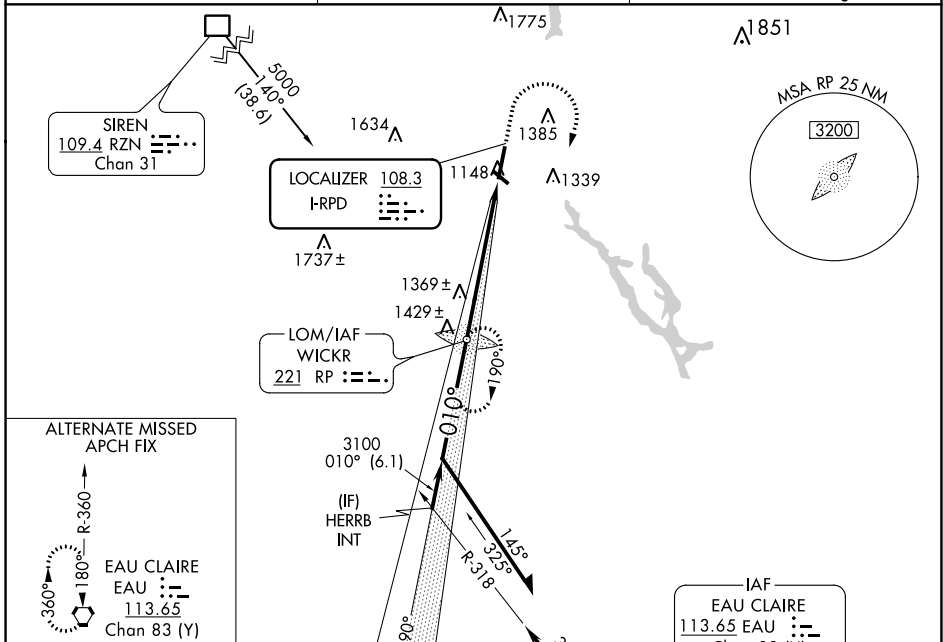
LOC I-RPD 108.3	APP CRS 010°	Rwy Idg 6500	TDZE 1102
		Apt Elev 1109	

ILS or LOC RWY 1

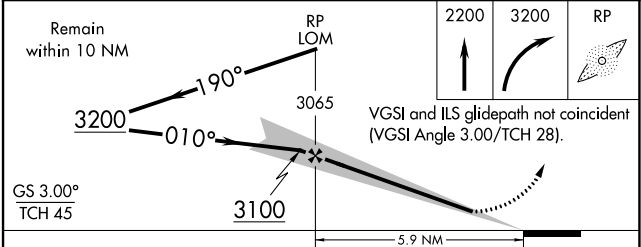
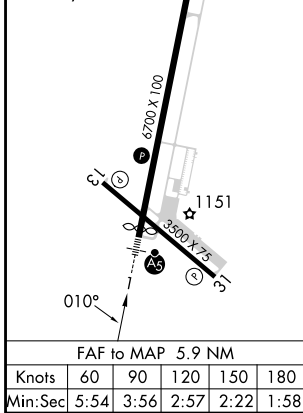
RICE LAKE RGNL/CARL'S FLD (RPD)

ADF required. From RZN DME: RNAV 1-GPS required.	MALSR 	MISSED APPROACH: Climb to 2200 then climbing right turn to 3200 direct WICKR LOM and hold.
 Circling Rwy 13, 31 NA at night.		

AWOS-3 120.525	MINNEAPOLIS CENTER 125.3 335.6	UNICOM 122.7 (CTAF)
--------------------------	--	-------------------------------



ELEV 1109	TDZE 1102
REIL Rws 13, 31	
REIL Rwy 19	
HIRL Rwy 1-19	
MIRL Rwy 13-31	



CATEGORY	A	B	C	D
S-ILS 1	1302-1/2		200 (200-1/2)	
S-LOC 1	1620-1/2	518 (600-1/2)	1620-1 518 (600-1)	1620-1 1/4 518 (600-1 1/4)
CIRCLING	1620-1 511 (600-1)	1740-1 631 (700-1)	1740-1 3/4 631 (700-1 3/4)	1940-2 3/4 831 (900-2 3/4)

EC-3, 28 NOV 2024 to 26 DEC 2024

EC-3, 28 NOV 2024 to 26 DEC 2024