

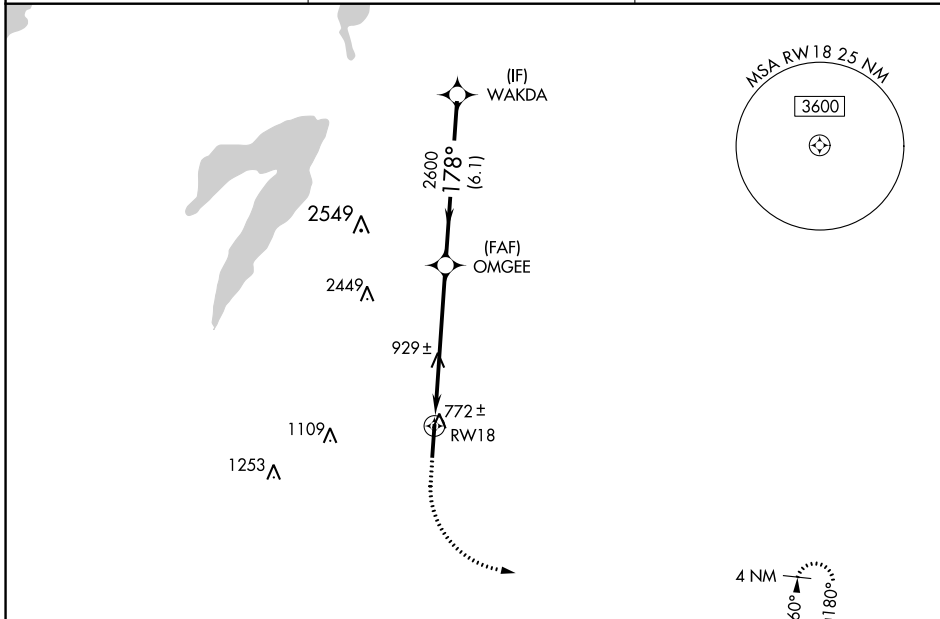
WAAS CH 62920 W18A	APP CRS 178°	Rwy Idg 6500 TDZE 727 Apt Elev 727
--	------------------------	---

RNAV (GPS) RWY 18

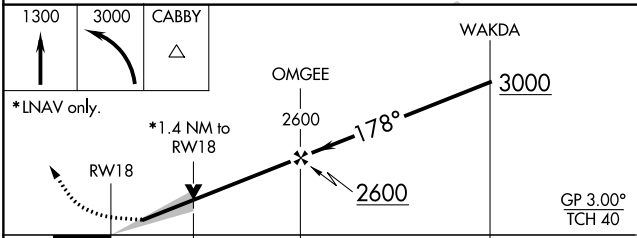
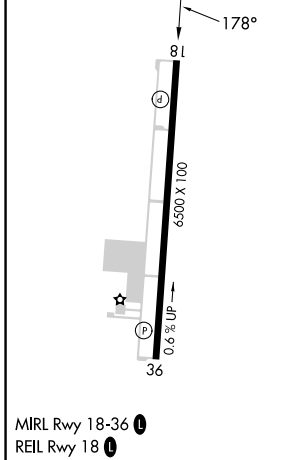
MID-WAY RGNL (JWY)

RNP APCH.	<p>MISSED APPROACH: Climb to 1300 then climbing left turn to 3000 direct CABBY and hold.</p>
<p>▽ ▲</p> <p>For uncompensated Baro-VNAV systems, LNAV/VNAV NA below -16°C or above 54°C.</p>	

AWOS-3P 119.575	LONE STAR APP CON 125.2 343.65	UNICOM 122.975 (CTAF)
---------------------------	--	---------------------------------



ELEV 727	TDZE 727
----------	----------



CATEGORY	A	B	C	D
LPV DA		927-3/4	200 (200-3/4)	
LNAV/VNAV DA		998-7/8	271 (300-7/8)	
LNAV MDA	1220-1	493 (500-1)	1220-1 3/8	493 (500-1 3/8)
CIRCLING	1220-1	493 (500-1)	1300-1 1/2 573 (600-1 1/2)	1420-2 1/4 693 (700-2 1/4)

SC-2, 28 NOV 2024 to 26 DEC 2024

SC-2, 28 NOV 2024 to 26 DEC 2024