

APP CRS	Rwy Idg	3297
327°	TDZE	1081
	Apt Elev	1082

RNAV (GPS) RWY 33

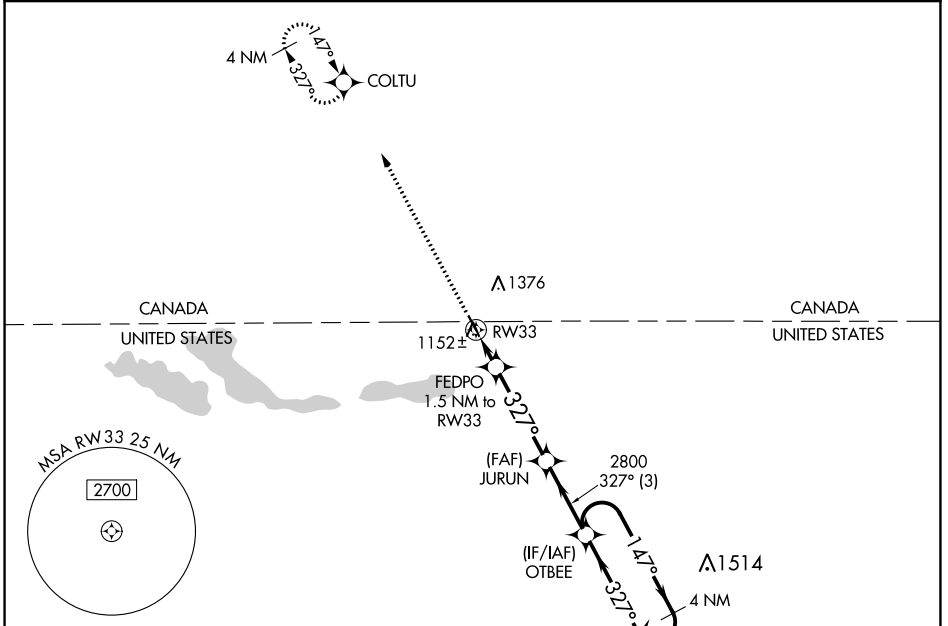
PINEY PINECREEK BORDER (48Y)

RNP APCH-GPS.

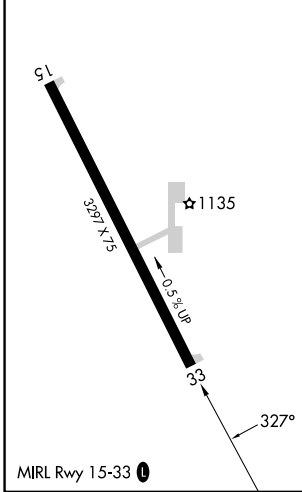
▼ Use Roseau altimeter setting; when not received, use
▲ NA Warroad altimeter setting and increase all MDA 40 feet.

MISSED APPROACH: Climb to 3700 direct COLTU and hold.

ROX AWOS-3 118.075	MINNEAPOLIS CENTER 134.75 251.1	UNICOM 122.8 (CTAF) 0
------------------------------	---	---------------------------------



ELEV 1082	TDZE 1081
-----------	-----------



3700	COLTU	JURUN	OTBEE	4 NM Holding Pattern
↑	✧			147° → 6000
	FEDPO 1.5 NM to RW33	≤ 3.00° TCH 40		← 327° 3000
	RW33	2800		
	-1.5 NM	3.8 NM	3 NM	
1580				
CATEGORY	A	B	C	D
LNAV MDA	1440-1	359 (400-1)		NA
CIRCLING	1500-1 418 (500-1)	1780-1 698 (700-1)		NA

NC-1, 28 NOV 2024 to 26 DEC 2024

NC-1, 28 NOV 2024 to 26 DEC 2024