

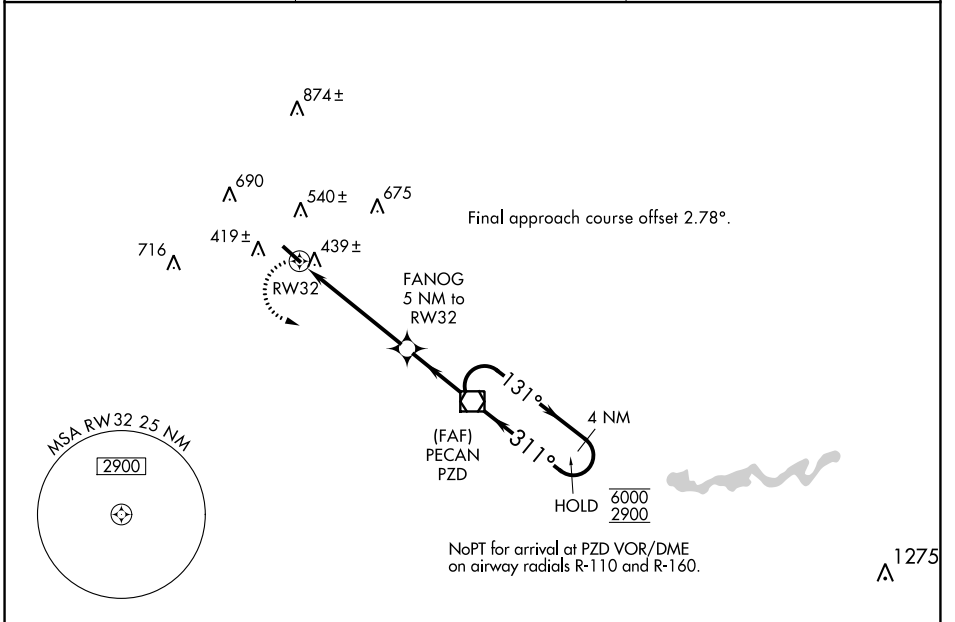
APP CRS	Rwy Idg	<b>4507</b>
<b>311°</b>	TDZE	<b>322</b>
	Apt Elev	<b>332</b>

# RNAV (GPS) RWY 32

DAWSON MUNI (16J)

RNP APCH	<p><b>▼</b> Rwy 32 helicopter visibility reduction below <math>\frac{3}{4}</math> SM NA.</p> <p><b>▲ NA</b> Use Albany altimeter setting. When Albany altimeter settings not received, use Americus altimeter setting and increase all MDAs 20 feet.</p>	MISSED APPROACH: Climbing left turn to 2900 direct PZD VOR/DME and hold, continue climb-in-hold to 2900.
----------	--	--

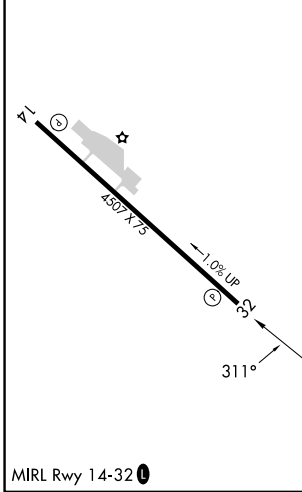
ABY ASOS <b>133.05</b>	JACKSONVILLE CENTER <b>125.75 363.075</b>	UNICOM <b>122.8 (CTAF)</b>
---------------------------	--	-------------------------------



SE-4, 28 NOV 2024 to 26 DEC 2024

SE-4, 28 NOV 2024 to 26 DEC 2024

ELEV	<b>332</b>	TDZE	<b>322</b>
------	------------	------	------------



2900	PZD	VGSI and descent angles not coincident (VGSI Angle 3.00/TCH 48).	4 NM Holding Pattern
		<p>FANOG 5 NM to RW32</p> <p>1920</p> <p>3.04° TCH 40</p>	<p>PZD VOR/DME</p> <p>131° → 6000</p> <p>← 311° 2900</p>
<p>RW32</p> <p>5 NM</p> <p>3 NM</p>			
CATEGORY	A	B	C
LNAV MDA	760-1	438 (500-1)	NA
CIRCLING	960-1	628 (700-1)	NA