

(CHIEF9.MCI) 23278

CHIEF NINE DEPARTURE

AL-9229 (FAA)

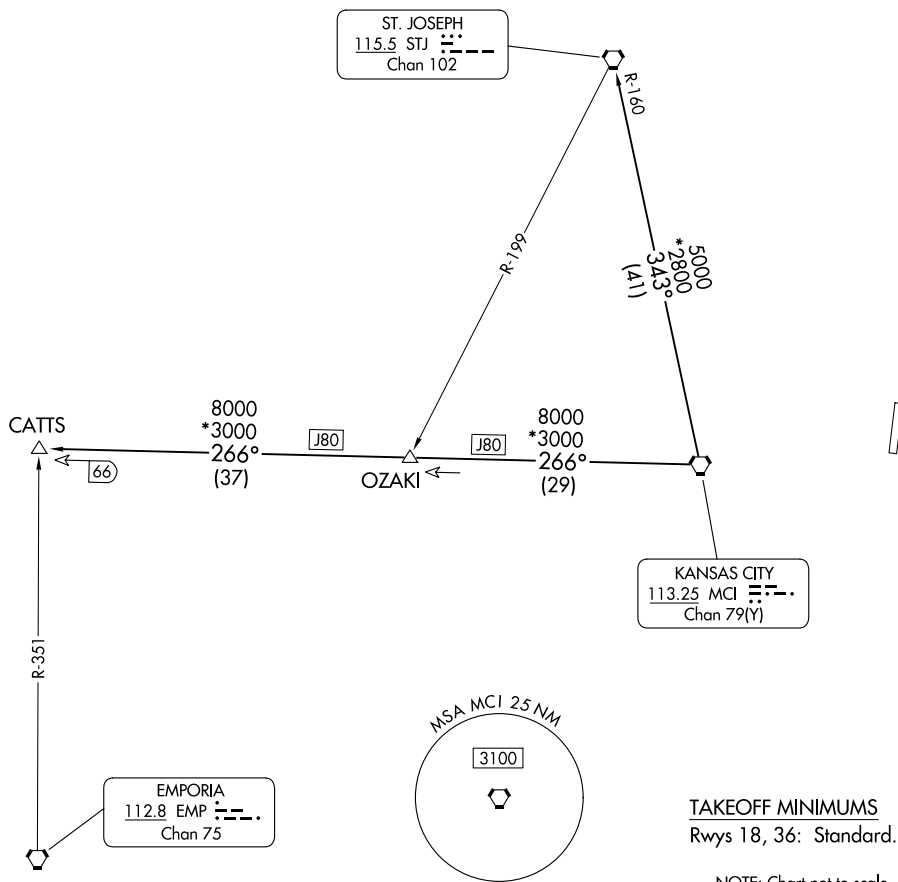
MIDWEST NTL AIR CENTER (GPH)

MOSBY, MISSOURI

KANSAS CITY DEP CON
118.4 307.35
CLNC DEL
118.2

**TOP ALTITUDE:
10000**

RADAR required.



NC-3, 28 NOV 2024 to 26 DEC 2024

NC-3, 28 NOV 2024 to 26 DEC 2024

TAKEOFF MINIMUMS
Rwys 18, 36: Standard.

NOTE: Chart not to scale.



DEPARTURE ROUTE DESCRIPTION

TAKEOFF ALL RUNWAYS: Climb on assigned heading for RADAR vectors to appropriate route. Maintain 10000 or as assigned by ATC, expect filed altitude 10 minutes after departure.

CATTS TRANSITION (CHIEF9.CATTS): From over MCI VORTAC on MCI R-266 to CATTS.

ST. JOSEPH TRANSITION (CHIEF9.STJ): From over MCI VORTAC on MCI R-343 and STJ R-160 to STJ VORTAC.

CHIEF NINE DEPARTURE

(CHIEF9.MCI) 05OCT23

MOSBY, MISSOURI

MIDWEST NTL AIR CENTER (GPH)