

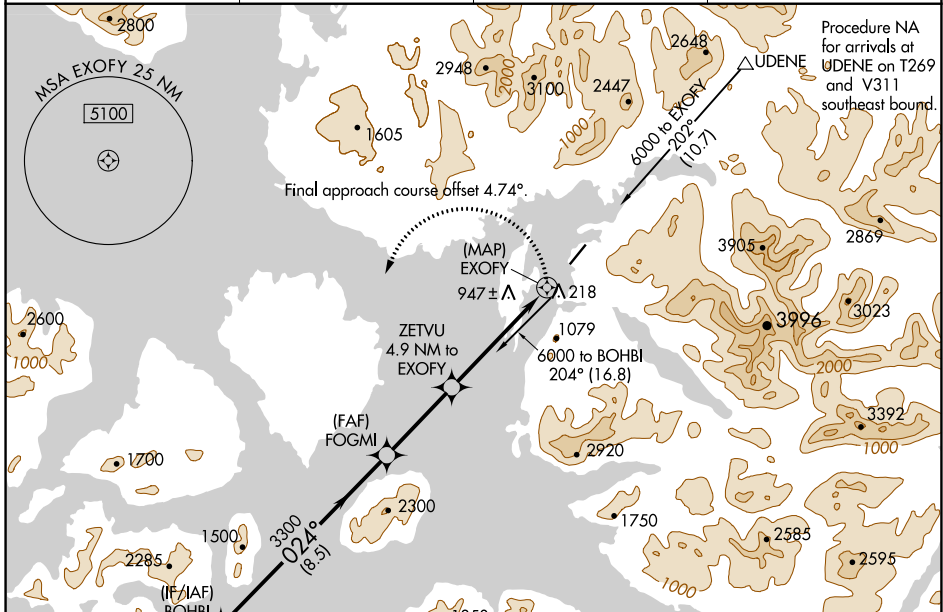
APP CRS	Rwy Idg	<b>5000</b>
<b>024°</b>	TDZE	<b>57</b>
	Apt Elev	<b>80</b>

# RNAV (GPS) Y RWY 2

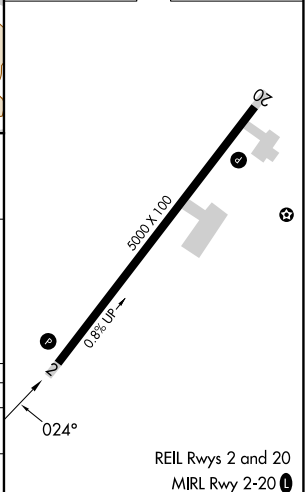
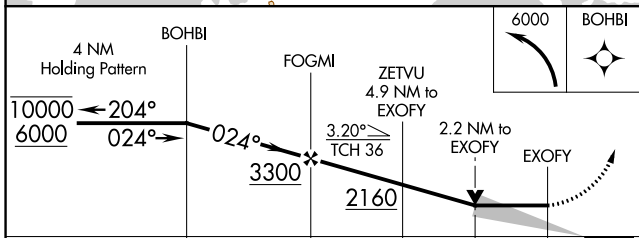
KLAWOCK (AKW) (PAKW)

RNP APCH-GPS.	MISSED APPROACH: (Do not exceed 165K until BOHBI) Climbing left turn to 6000 direct BOHBI and hold, continue climb-in-hold to 6000.
Circling NA east of Rwy 2-20. Circling Rwy 20 NA at night. -9°C	

ASOS <b>135.45</b>	ANCHORAGE CENTER <b>118.5 284.6</b>	KETCHIKAN RADIO <b>122.25</b>	CTAF <b>120.9</b>
-----------------------	--	----------------------------------	----------------------



ELEV 80	TDZE 57
---------	---------



CATEGORY	A	B	C	D
LNVA MDA	1160-1 $\frac{3}{8}$ 1103 (1100-1 $\frac{3}{8}$ )	1160-1 $\frac{1}{2}$ 1103 (1100-1 $\frac{1}{2}$ )	1160-3 1103 (1100-3)	NA
CIRCLING	1160-1 $\frac{1}{2}$	1080 (1100-1 $\frac{1}{2}$ )	1300-3 1220 (1300-3)	NA

AK, 31 OCT 2024 to 26 DEC 2024

AK, 31 OCT 2024 to 26 DEC 2024