

| | | | |
|--|------------------------|---|-------------|
| WAAS CH 65723 W34A | APP CRS 337° | Rwy ldg TDZE 526 Apt Elev 533 | 3008 |
|--|------------------------|---|-------------|

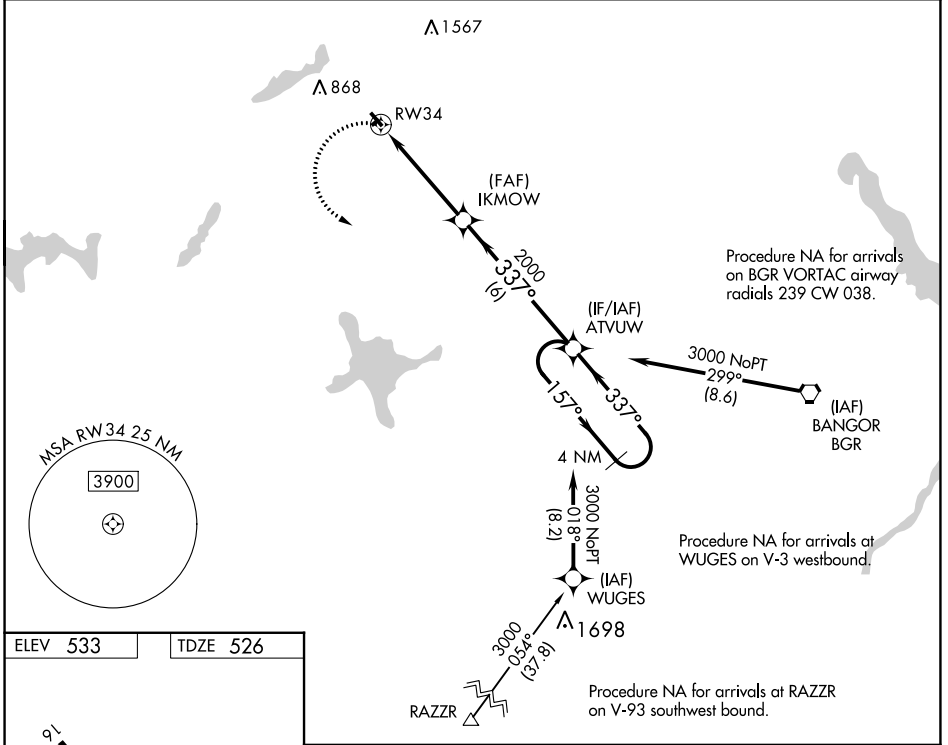
RNAV (GPS) RWY 34

DEXTER RGNL (1B)

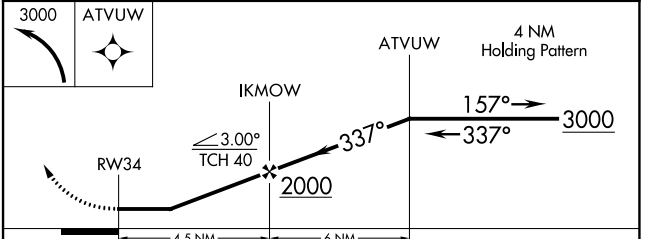
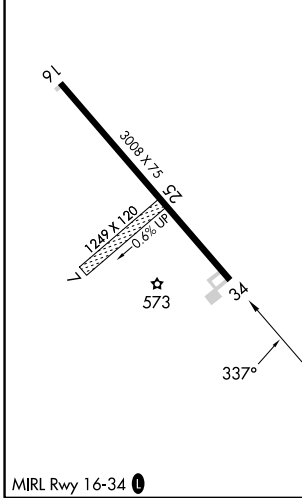
⚠ Procedure NA at night. DME/DME RNP-0.3 NA. Use Bangor altimeter setting, when not received, use Augusta altimeter setting and increase all MDA 40 feet.
⚠ Rwy 16, 34 helicopter visibility reduction below 1 SM NA. Circling NA to Rwys 7 and 25.

MISSED APPROACH: Climbing left turn to 3000 direct ATVUW and hold.

| | |
|--|-------------------------------|
| BANGOR APP CON 118.925 239.3 | UNICOM 122.8 (CTAF) |
|--|-------------------------------|



| | |
|----------|----------|
| ELEV 533 | TDZE 526 |
|----------|----------|



| CATEGORY | A | B | C | D |
|----------|-----------------------|-------------------------|----|---|
| LP MDA | 980-1 | 454 (500-1) | NA | |
| LNAV MDA | 1140-1 | 614 (700-1) | NA | |
| CIRCLING | 1220-1 687 (700-1) | 1360-1¼ 827 (900-1¼) | NA | |

NE-1, 28 NOV 2024 to 26 DEC 2024

NE-1, 28 NOV 2024 to 26 DEC 2024