

WAAS CH <b>70631</b> W31A	APP CRS <b>313°</b>	Rwy Idg TDZE Apt Elev	<b>4198</b> <b>1606</b> <b>1607</b>
---------------------------------	------------------------	-----------------------------	---

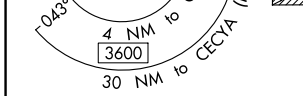
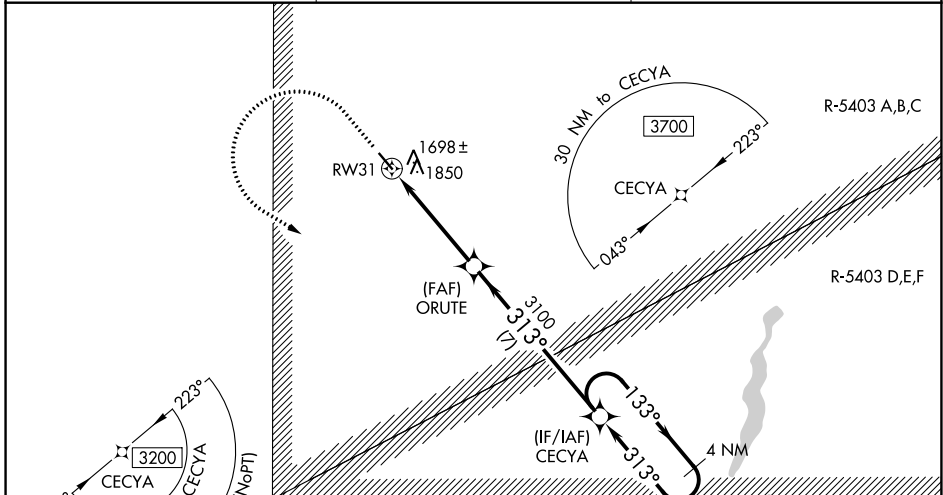
# RNAV (GPS) RWY 31

CARRINGTON MUNI (46D)

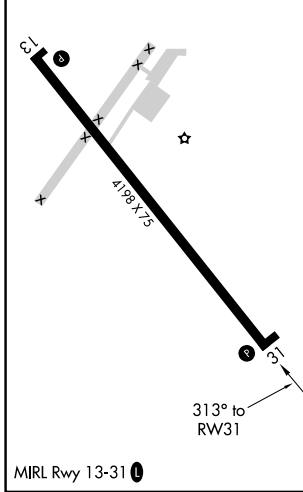
**⚠** For uncompensated Baro-VNAV systems, LNAV/VNAV NA below -18°C (0°F) or above 54°C (130°F). DME/DME RNP-0.3 NA. Helicopter visibility reduction below ¾ SM NA. Circling Rwy 13 NA at night. VDP and Baro-VNAV NA with Jamestown altimeter setting. When local altimeter setting not received, use Jamestown altimeter setting and increase all DA and MDA 100 feet, increase LPV all Cats visibility ½ mile; LNAV/VNAV all Cats visibility ¾ mile; LNAV Cat C visibility ¼ mile and Circling Cat C visibility ¾ mile.

**⚠** MISSED APPROACH: Climb to 2300 then climbing left turn to 3200 direct CECYA and hold.

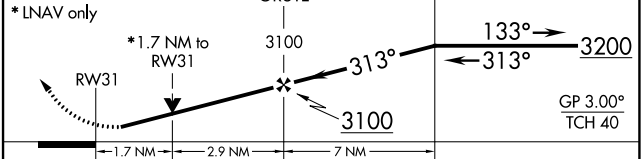
AWOS-3 <b>118.575</b>	MINNEAPOLIS CENTER <b>124.2 270.3</b>	CTAF <b>122.9 0</b>
--------------------------	--	------------------------



ELEV 1607	TDZE 1606
-----------	-----------



2300 3200 CECYA VGSI and RNAV glidepath not coincident (VGSI Angle 3.00/TCH 20). 4 NM Holding Pattern



CATEGORY	A	B	C	D
LPV DA	1856-1	250 (300-1)		NA
LNAV/VNAV DA	2050-1½	444 (500-1½)		NA
LNAV MDA	2160-1	554 (600-1)	2160-1½ 554 (600-1½)	NA
<b>C</b> CIRCLING	2200-1	593 (600-1)	2200-1½ 593 (600-1½)	NA

NC-1, 28 NOV 2024 to 26 DEC 2024

NC-1, 28 NOV 2024 to 26 DEC 2024