

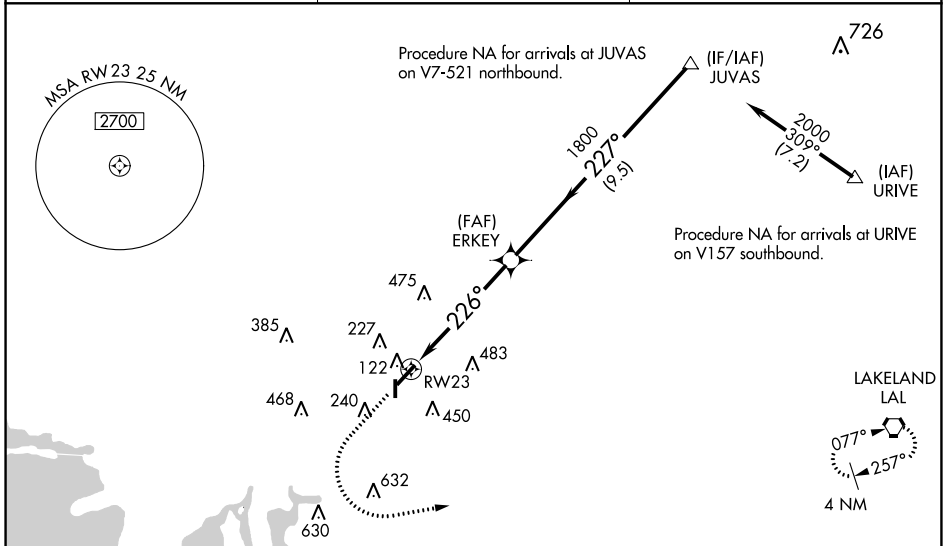
WAAS CH 78100 W23A	APP CRS 226°	Rwy Idg 4200 TDZE 21 Apt Elev 21
--	------------------------	---

RNAV (GPS) RWY 23

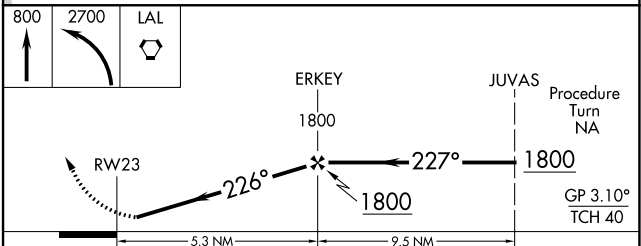
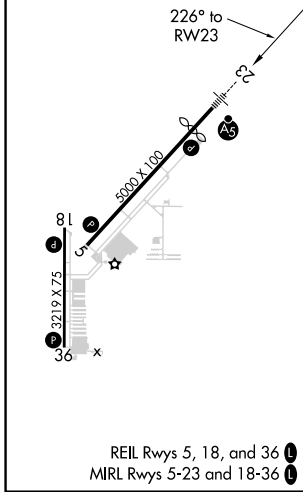
TAMPA EXEC (VDF)

RNP APCH-GPS.	MALSR 	MISSED APPROACH: Climb to 800 then climbing left turn to 2700 direct to LAL VORTAC and hold.
<p>▼ Inop table does not apply to LPV and LNAV Cat A/B. Baro-VNAV NA when using Tampa Intl altimeter setting. For uncompensated Baro-VNAV systems, LNAV/VNAV ▲ NA below -15°C (5°F) or above 54°C (130°F). Rwy 23 helicopter visibility reduction below 3/4 SM NA. When local altimeter setting not received, use Tampa Intl altimeter setting and increase LPV DA to 323 feet, LNAV/VNAV DA to 513; increase all MDAs 40 feet, and LNAV and Circling Cat C visibilities 1/4 SM. Circling Rwy 18, 36 NA at night.</p>		

AWOS-3 121.125	TAMPA APP CON 119.9 290.3	UNICOM 122.7 (CTAF)
--------------------------	-------------------------------------	-------------------------------



ELEV 21	D	TDZE 21
---------	----------	---------



CATEGORY	A	B	C	D
LPV DA	298-1	277 (300-1)		NA
LNAV/VNAV DA	488-1 1/8	467 (500-1 1/8)		NA
LNAV MDA	560-1	539 (600-1)		NA
CIRCLING	560-1 539 (600-1)	760-1 739 (800-1)	800-2 1/4 779 (800-2 1/4)	NA

SE-3, 28 NOV 2024 to 26 DEC 2024

SE-3, 28 NOV 2024 to 26 DEC 2024