

WAAS CH 97426 W05A	APP CRS 046°	Rwy Idg TDZE Apt Elev	4956 21 21
--	------------------------	-----------------------------	---------------------------------------

RNAV (GPS) RWY 5

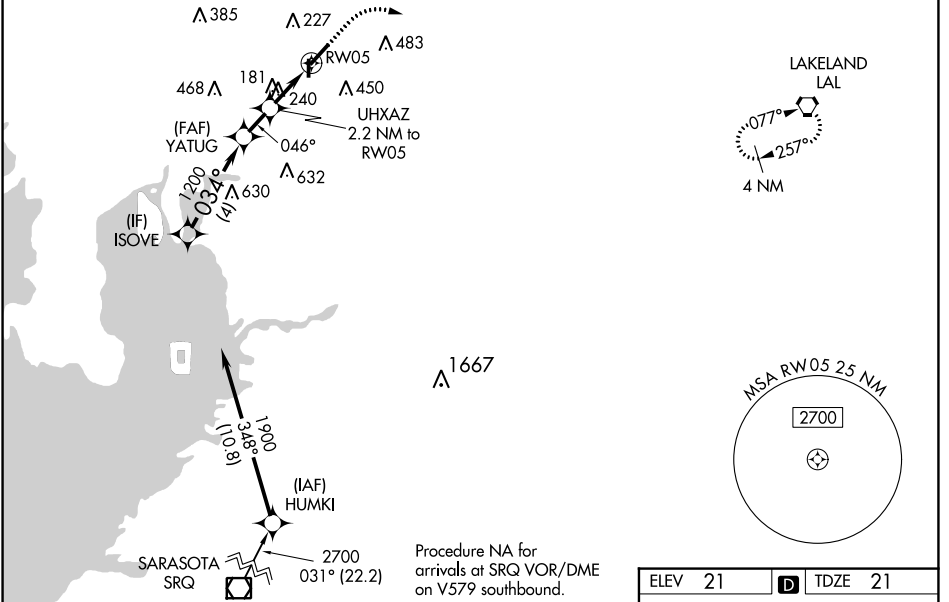
TAMPA EXEC (VDF)

RNP APCH-GPS.

⚠ Rwy 5 helicopter visibility reduction below $\frac{3}{4}$ SM NA. For uncompensated Baro-VNAV systems, LNAV/VNAV NA below 1°C (34°F) or above 54°C (130°F). When local altimeter setting not received, use Tampa Intl altimeter setting and increase LPV DA to 316 feet, LNAV/VNAV DA to 507 feet; increase all MDAs 40 feet and increase LNAV and Circling Cat C visibilities $\frac{1}{4}$ SM. Baro-VNAV and VDP NA when using Tampa Intl altimeter setting. Circling Rwy 18, 36 NA at night.

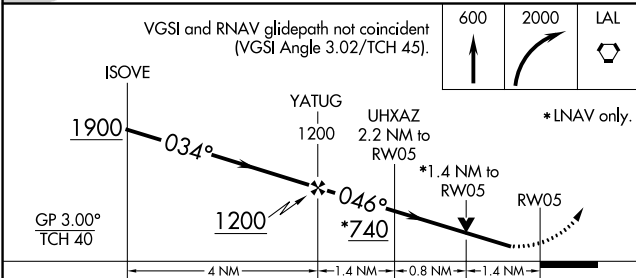
MISSED APPROACH:
Climb to 600 then climbing right turn to 2000 direct LAL VORTAC and hold.

AWOS-3 121.125	TAMPA APP CON 119.9 290.3	UNICOM 122.7 (CTAF)
--------------------------	-------------------------------------	-------------------------------



SE-3, 28 NOV 2024 to 26 DEC 2024

SE-3, 28 NOV 2024 to 26 DEC 2024



ELEV 21	TDZE 21
---------	---------

CATEGORY	A	B	C	D
LPV DA	271- $\frac{7}{8}$	250 (300- $\frac{7}{8}$)		NA
LNAV/VNAV DA	507-1 $\frac{5}{8}$	486 (500-1 $\frac{5}{8}$)		NA
LNAV MDA	500-1	479 (500-1)	500-1 $\frac{3}{8}$ 479 (500-1 $\frac{3}{8}$)	NA
CIRCLING	540-1 519 (600-1)	760-1 739 (800-1)	800-2 $\frac{1}{4}$ 779 (800-2 $\frac{1}{4}$)	NA

