

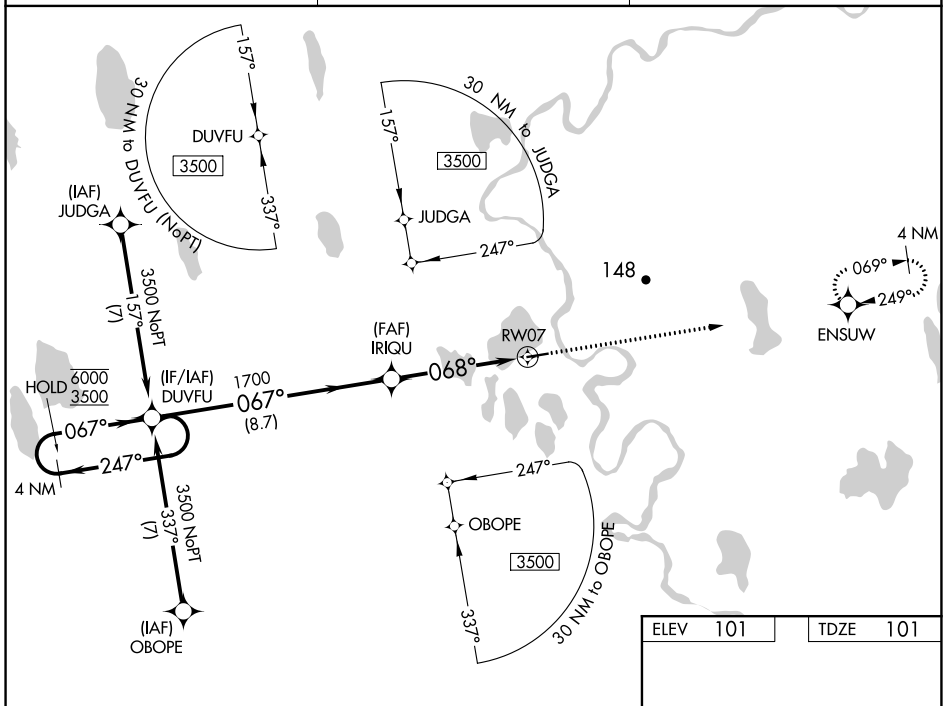
WAAS CH <b>93743</b> <b>W07A</b>	APP CRS <b>068°</b>	Rwy Idg TDZE Apt Elev	<b>4370</b> <b>101</b> <b>101</b>
--	------------------------	-----------------------------	---

# RNAV (GPS) RWY 7

ATGASUK EDWARD BURNELL SR MEML (ATK)(PATQ)

RNP APCH.	MISSED APPROACH: Climb to 3500 direct ENSUW and hold, continue climb-in-hold to 3500.
<p><b>⚠</b> For uncompensated Baro-VNAV systems, LNAV/VNAV NA below -22°C or above 54°C.</p>	

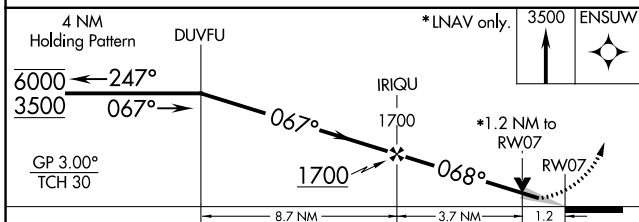
AWOS-3P <b>119.925</b>	ANCHORAGE CENTER <b>135.3 239.25</b>	CTAF <b>122.9</b>
---------------------------	---	----------------------



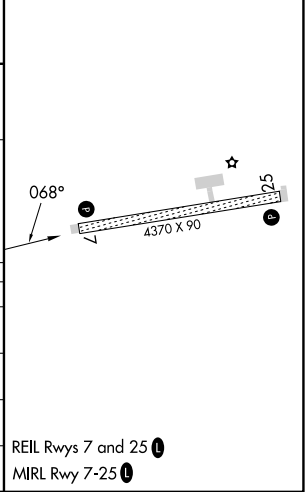
AK, 31 OCT 2024 to 26 DEC 2024

AK, 31 OCT 2024 to 26 DEC 2024

ELEV 101	TDZE 101
----------	----------



CATEGORY	A	B	C	D
LPV DA		351-1	250 (300-1)	
LNAV/VNAV DA		351-1	250 (300-1)	
LNAV MDA	500-1	399 (400-1)	500-1½	399 (400-1½)
<b>C</b> CIRCLING	500-1 399 (400-1)	560-1 459 (500-1)	560-1½ 459 (500-1½)	700-2 599 (600-2)



# RNAV (GPS) RWY 7