

WAAS CH 45725 W13A	APP CRS 135°	Rwy Idg TDZE Apt Elev	5500 804 814
--	------------------------	-----------------------------	---

RNAV (GPS) RWY 13

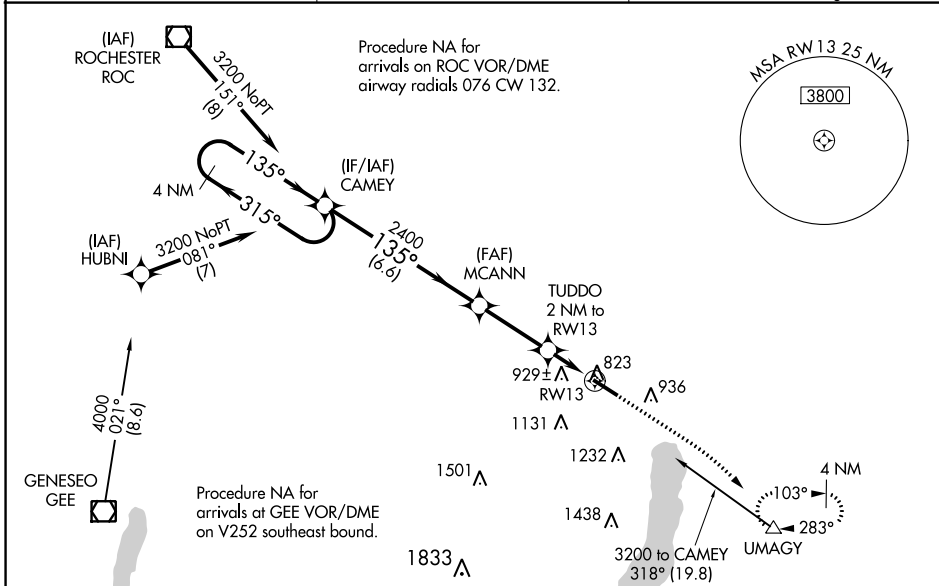
CANANDAIGUA (IUA)

RNP APCH-GPS.

Baro-VNAV and VDP NA when using Rochester altimeter setting. Rwy 13 helicopter visibility reduction below ¼ SM NA. For uncompensated Baro-VNAV systems, LNAV/VNAV NA below -16°C or above 54°C. When local altimeter setting not received, use Rochester altimeter setting and increase LPV DA to 1138 feet and all visibilities ¼ SM. Increase LNAV/VNAV DA to 1333 feet and all visibilities ½ SM. Increase all MDAs 100 feet and LNAV visibility Cat C ¾ SM, and Circling visibility Cat C ½ SM.

MISSED APPROACH: Climb to 1300 then climbing right turn to 4000 direct UMACY and hold, continue climb-in-hold to 4000.

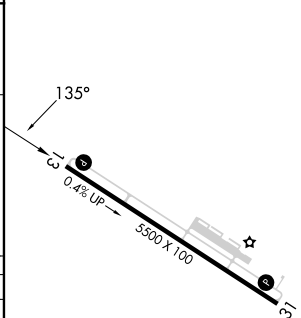
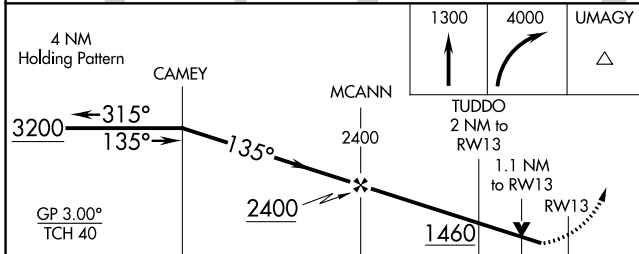
AWOS-3P 118.675	ROCHESTER APP CON 119.55 269.6	UNICOM 122.8 (CTAF)
---------------------------	--	-------------------------------



NE-2, 28 NOV 2024 to 26 DEC 2024

NE-2, 28 NOV 2024 to 26 DEC 2024

ELEV 814	TDZE 804
----------	----------



CATEGORY	A	B	C	D
LPV DA	1056-¾	252 (300-¾)		NA
LNAV/VNAV DA	1251-1⅜	447 (500-1⅜)		NA
LNAV MDA	1180-1	376 (400-1)		NA
C CIRCLING	1460-1	646 (700-1)	1540-2 726 (800-2)	NA

MIRL Rwy 13-31
REL Rws 13 and 31