

WAAS CH <b>40125</b> <b>W31A</b>	APP CRS <b>315°</b>	Rwy Idg TDZE Apt Elev	<b>5500</b> <b>814</b> <b>814</b>
--	------------------------	-----------------------------	---

# RNAV (GPS) RWY 31

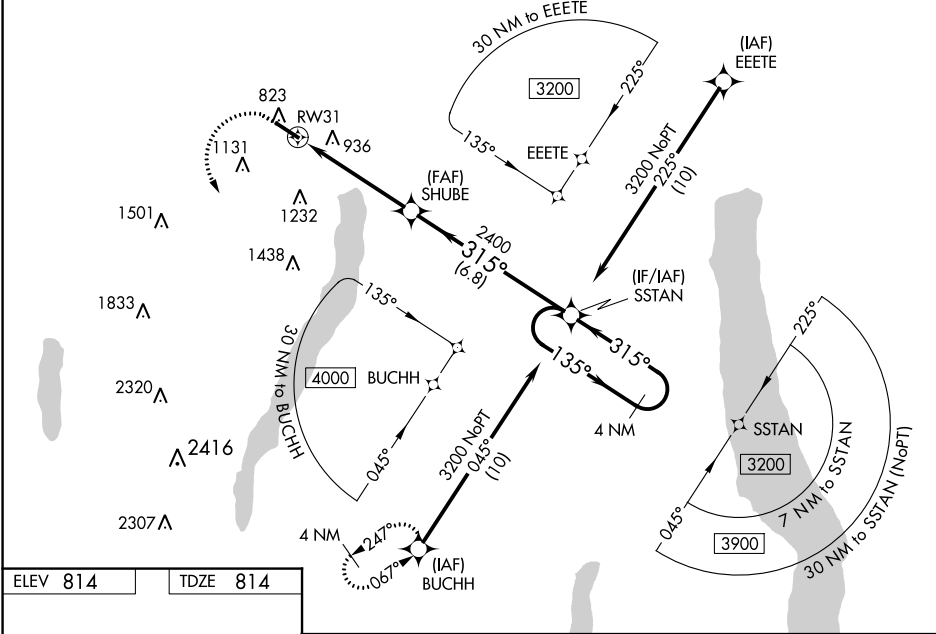
CANANDAIGUA (IUA)

RNP APCH-GPS

**NA** For uncompensated Baro-VNAV systems, LNAV/VNAV NA below -16°C or above 54°C. When local altimeter setting not received, use Rochester altimeter setting and increase LPV DA to 1146 feet and all visibilities ¼ SM. Increase LNAV/VNAV DA to 1328 feet and all visibilities ½ SM. Increase all MDAs 100 feet and LNAV visibility Cat C ¾ SM, and Circling visibility Cat C ½ SM. Rwy 31 helicopter visibility reduction below ¾ SM NA. Baro-VNAV and VDP NA when using Frederick Douglass/Greater Rochester Intl altimeter setting.

**MISSED APPROACH:** Climb to 1400 then climbing left turn to 3700 direct BUCHH and hold.

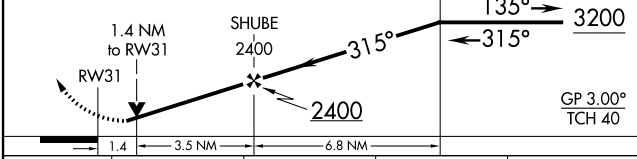
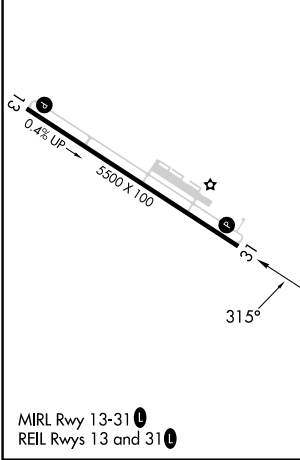
AWOS-3P <b>118.675</b>	ROCHESTER APP CON <b>119.55 269.6</b>	UNICOM <b>122.8 (CTAF) 1</b>
---------------------------	--	---------------------------------



NE-2, 28 NOV 2024 to 26 DEC 2024

NE-2, 28 NOV 2024 to 26 DEC 2024

ELEV <b>814</b>	TDZE <b>814</b>
-----------------	-----------------



CATEGORY	A	B	C	D
LPV DA	1064-¾	250 (300-¾)		NA
LNAV/VNAV DA	1246-1¼	432 (500-1¼)		NA
LNAV MDA	1300-1	486 (500-1)	1300-1¾ 486 (500-1¾)	NA
<b>C</b> CIRCLING	1460-1	646 (700-1)	1540-2 726 (800-2)	NA