

WAAS CH 53627 W29A	APP CRS 294°	Rwy Idg TDZE 2130 Apt Elev 2131
--	------------------------	---

RNAV (GPS) RWY 29

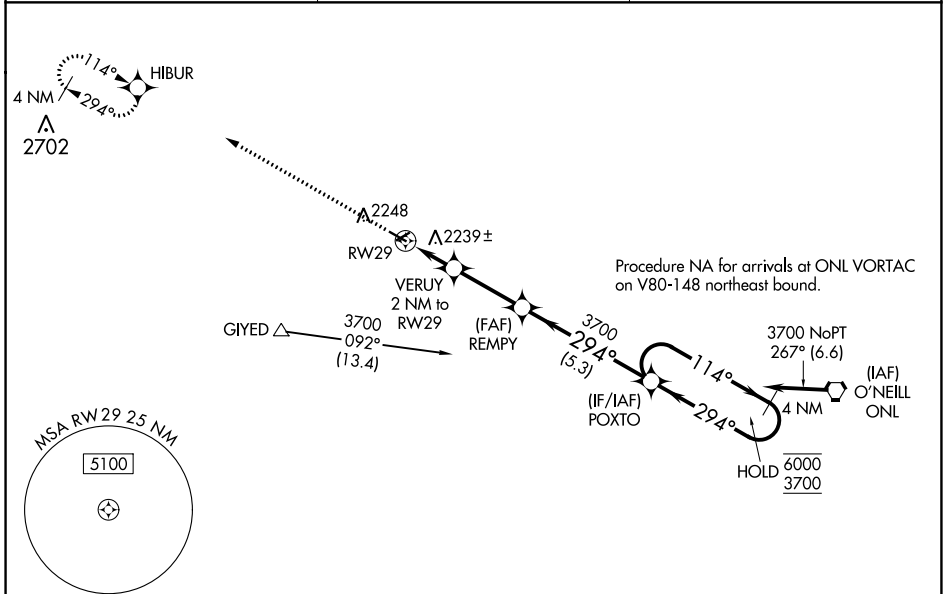
STUART-ATKINSON MUNI (8V2)

RNP APCH - GPS.

Baro-VNAV NA. Circling NA to Rwy 5 and 23. Use ONL altimeter setting; when not received, use ANW altimeter setting and increase LPV DA to 2538 feet and all visibilities to 1 3/8 SM, LNAV/VNAV DA to 2563 feet and all visibilities to 1 1/2 SM, increase all MDAs 120 feet.

MISSED APPROACH: Climb to 3900 direct HIBUR and hold.

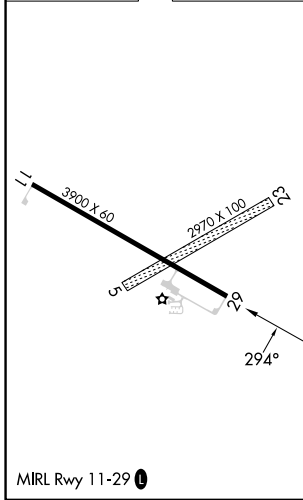
ONL AWOS-3 121.125	MINNEAPOLIS CENTER 128.0 257.95	CTAF 122.9
------------------------------	---	----------------------



NC-2, 28 NOV 2024 to 26 DEC 2024

NC-2, 28 NOV 2024 to 26 DEC 2024

ELEV 2131	TDZE 2130
-----------	-----------



3900	HIBUR	REMPY	POXTO	4 NM Holding Pattern
VERUY 2 NM to RW29	3700	3700	6000	3700
2800	294°	114°	294°	GP 3.00° TCH 40
2 NM	2.8 NM	5.3 NM		
CATEGORY	A	B	C	D
LPV DA	2432-1	302 (400-1)		NA
LNAV/VNAV DA	2457-1 1/8	327 (400-1 1/8)		NA
LNAV MDA	2560-1	430 (500-1)		NA
CIRCLING	2620-1 489 (500-1)	2640-1 509 (600-1)		NA