

| | | |
|---|------------------------|---|
| WAAAS CH 62933 W13A | APP CRS 128° | Rwy Idg 4102 TDZE 1376 Apt Elev 1376 |
|---|------------------------|---|

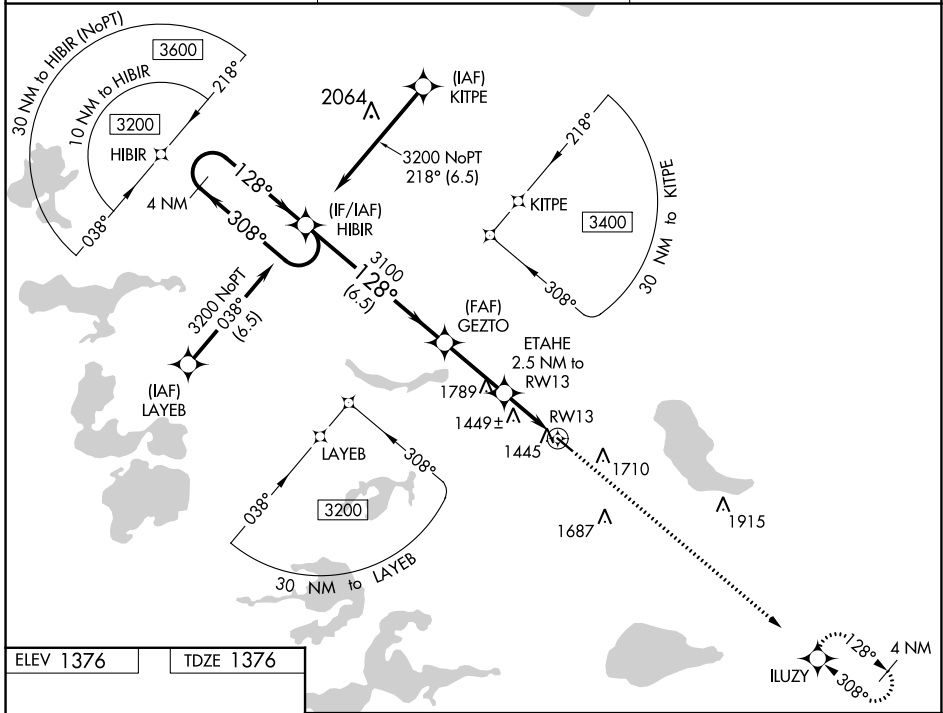
RNAV (GPS) RWY 13

PERHAM MUNI (16D)

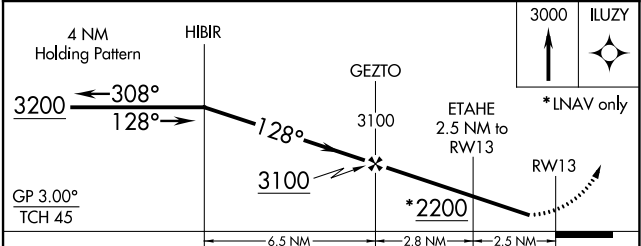
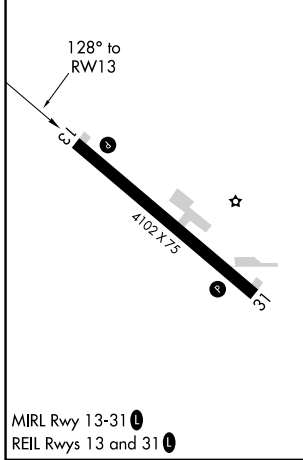
⚠ Baro-VNAV NA. DME/DME RNP-0.3 NA. Helicopter visibility reduction below 3/4 SM NA. Use Detroit Lakes altimeter setting; when not received, use Wadena altimeter setting.

⚠ NA MISSED APPROACH: Climb to 3000 direct ILUZY and hold.

| | | |
|--|-----------------------|----------------------|
| MINNEAPOLIS CENTER 126.1 269.2 | GCO 121.725 | CTAF 122.9 |
|--|-----------------------|----------------------|



| | |
|-----------|-----------|
| ELEV 1376 | TDZE 1376 |
|-----------|-----------|



| CATEGORY | A | B | C | D |
|-------------------|--------|-------------|---|----|
| LPV DA | 1671-1 | 295 (300-1) | | NA |
| LNAV/VNAV DA | 1671-1 | 295 (300-1) | | NA |
| LNAV MDA | 1760-1 | 384 (400-1) | | NA |
| C CIRCLING | 2120-1 | 744 (800-1) | | NA |

NC-1, 28 NOV 2024 to 26 DEC 2024

NC-1, 28 NOV 2024 to 26 DEC 2024