

WAAS CH <b>78133</b> <b>W31A</b>	APP CRS <b>308°</b>	Rwy ldg TDZE <b>1374</b> Apt Elev <b>1376</b>
--	------------------------	---

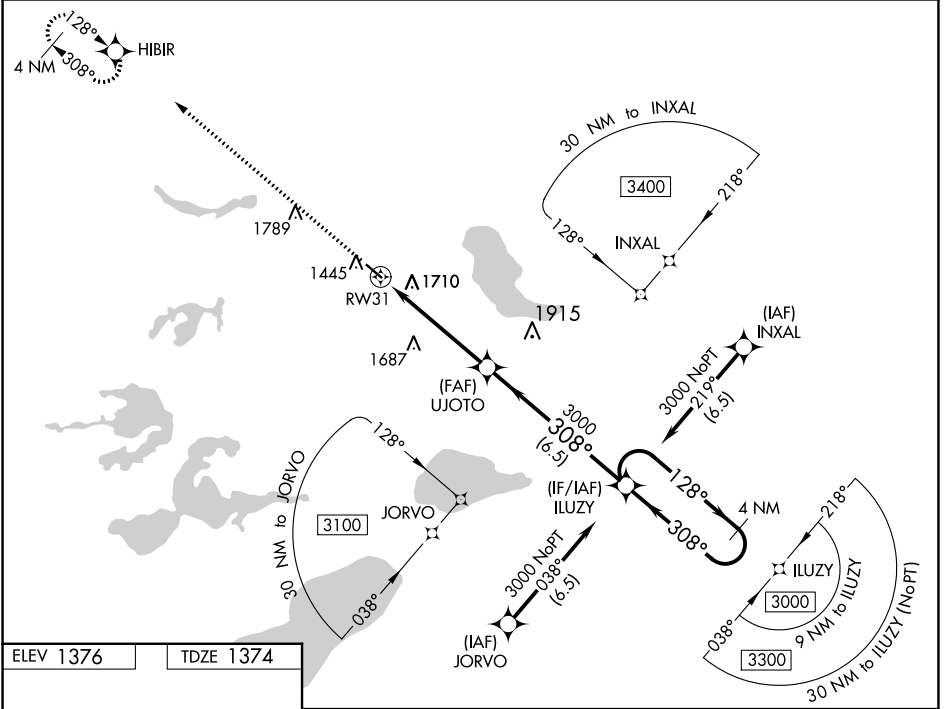
# RNAV (GPS) RWY 31

PERHAM MUNI (16D)

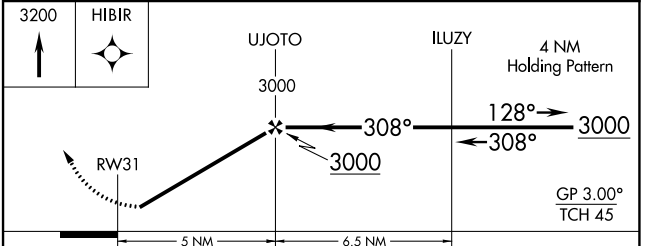
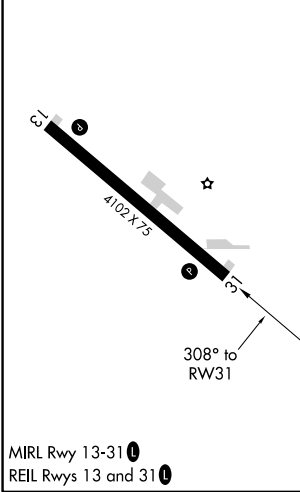
**Baro-VNAV NA. DME/DME RNP-0.3 NA. Helicopter visibility reduction below 3/4 SM NA. Use Detroit Lakes altimeter setting; when not received, use Wadena altimeter setting.**

**MISSED APPROACH:** Climb to 3200 direct HIBIR and hold.

MINNEAPOLIS CENTER <b>126.1 269.2</b>	GCO <b>121.725</b>	CTAF <b>122.9</b>
--	-----------------------	----------------------



ELEV 1376	TDZE 1374
-----------	-----------



CATEGORY	A	B	C	D
LPV DA	1669-1	295 (300-1)		NA
LNAV/VNAV DA	2158-2½	784 (800-2½)		NA
LNAV MDA	2080-1	706 (800-1)		NA
<b>C</b> CIRCLING	2120-1	744 (800-1)		NA

NC-1, 28 NOV 2024 to 26 DEC 2024

NC-1, 28 NOV 2024 to 26 DEC 2024