

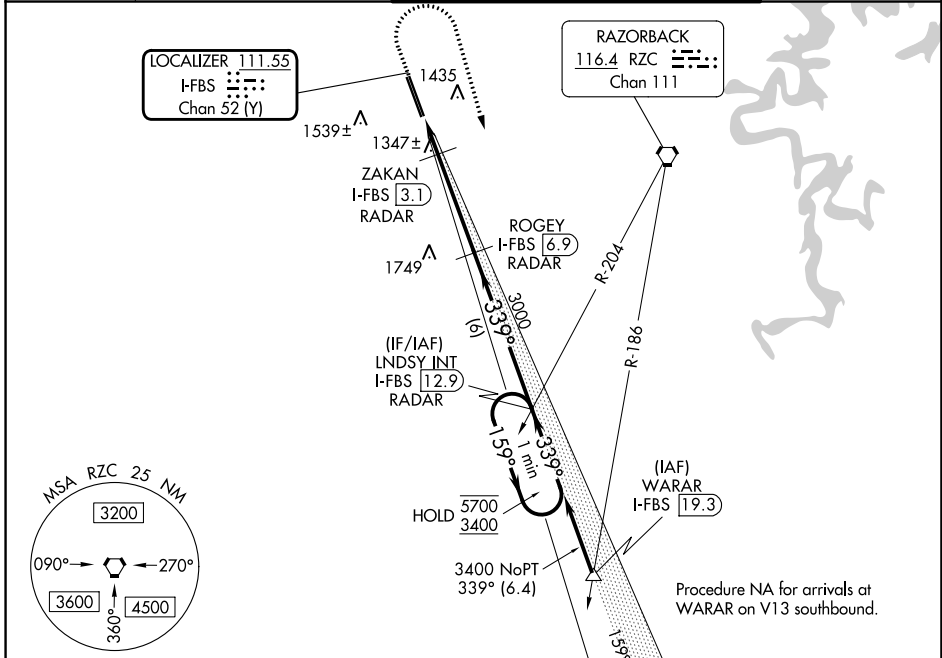
LOC/DME I-FBS 111.55 Chan 52(Y)	APP CRS 339°	Rwy Idg 8800 TDZE 1273 Apt Elev 1288
---	------------------------	---

ILS or LOC RWY 34R

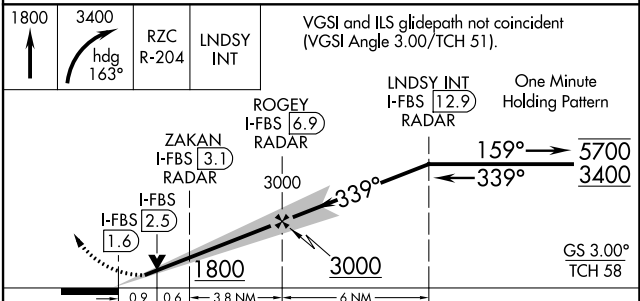
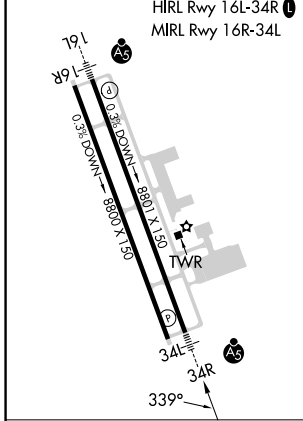
NORTHWEST ARKANSAS NTL (X.N.A)

DME or RADAR required for LOC only.	MALSR	MISSED APPROACH: Climb to 1800 then climbing right turn to 3400 on heading 163° and RZC VORTAC R-204 to LNDYSY INT/I-FBS 12.9 DME/RADAR and hold.
<p>▼ For inop ALS, increase S-ILS 34R Cat E visibility to RVR 4000 and S-LOC 34R Cat E visibility to RVR 5000.</p> <p>▲ *RVR 1800 authorized with use of FD or AP or HUD to DA.</p>		

ATIS 119.425	RAZORBACK APP CON* 121.0 244.575	NORTHWEST ARKANSAS NTL TOWER * 127.1 (CTAF) 0	GND CON 121.9
------------------------	--	---	-------------------------



ELEV 1288	D TDZE 1273
------------------	---------------------------



CATEGORY	A	B	C	D	E
S-ILS 34R*	1473/24 200 (200-1/2)				
S-LOC 34R	1600/24	327 (400-1/2)	1600/26	327 (400-1/2)	
CIRCLING	1740-1 452 (500-1)	1760-1 472 (500-1)	2040-2 1/4 752 (800-2 1/4)	2080-2 1/2 792 (800-2 1/2)	2080-2 3/4 792 (800-2 3/4)

SC-1, 28 NOV 2024 to 26 DEC 2024

SC-1, 28 NOV 2024 to 26 DEC 2024