

WAAS CH 56246 W16A	APP CRS 159°	Rwy Idg TDZE 1287 Apt Elev 1288	8800 1287 1288
--	------------------------	---	---

RNAV (GPS) RWY 16L

NORTHWEST ARKANSAS NTL (X.N.A)

RNP APCH - GPS.

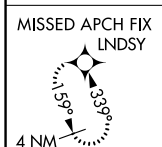
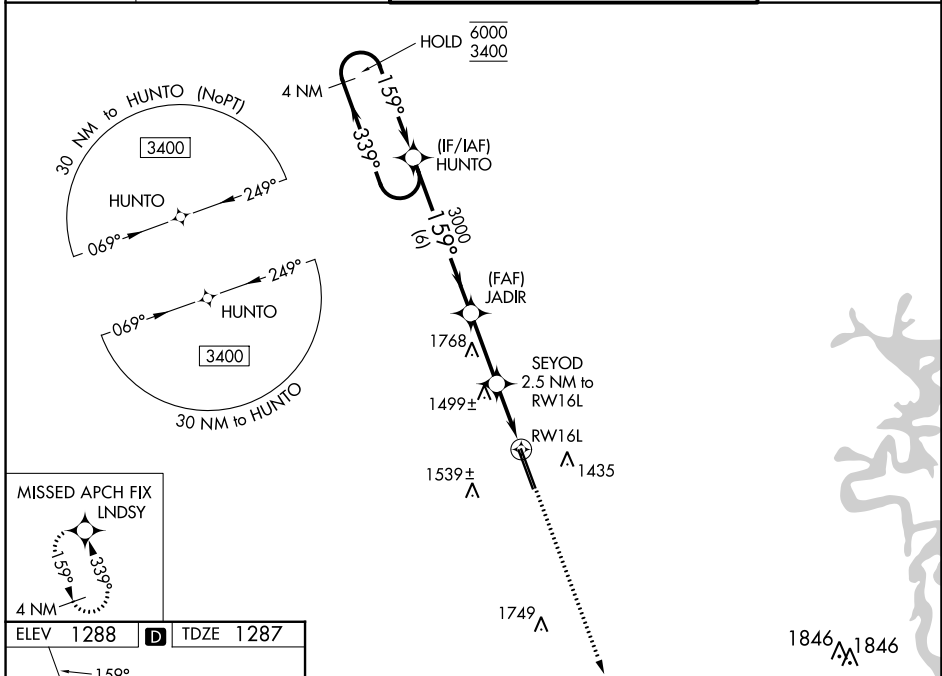
⚠ For uncompensated Baro-VNAV systems, LNAV/VNAV NA below -15°C or above 54°C. For inop ALS, increase LPV Cat E visibility to RVR 4000, LNAV/VNAV Cat E visibility to 1¼ SM and LNAV Cats C, D, and E visibility to 1¾ SM. *RVR 1800 authorized with use of FD or AP or HUD to DA.

MALSR

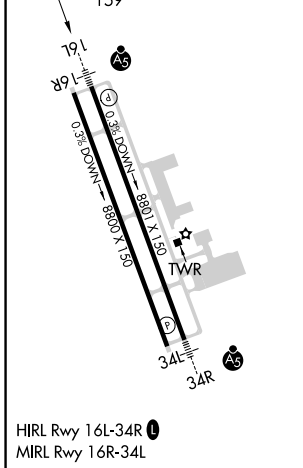


MISSED APPROACH:
Climb to 3400 direct LND SY and hold.

ATIS 119.425	RAZORBACK APP CON * 121.0 244.575	NORTHWEST ARKANSAS NTL TOWER * 127.1 (CTAF) 0	GND CON 121.9
------------------------	---	---	-------------------------



ELEV 1288	D	TDZE 1287
-----------	----------	-----------



4 NM Holding Pattern		VGSi and RNAV glidepath not coincident (VGSi Angle 3.00/TCH 52).			3400	LND SY
6000 ← 339°		→ 159°		3000	JADIR	SEYOD 2.5 NM to RWY 16L
GP 3.00° TCH 57		3000		2140	1.3 NM to RWY 16L	1.3
← 6 NM		← 2.7 NM		1.2	1.3	
CATEGORY	A	B	C	D	E	
LPV DA*	1487/24		200 (200-½)			
LNAV/VNAV DA	1710/40		423 (500-¾)			
LNAV MDA	1760/24	473 (500-½)		1760/50		473 (500-1)
CIRCLING	1760-1	472 (500-1)		2040-2¼ 752 (800-2¼)	2080-2½ 792 (800-2½)	2080-2¾ 792 (800-2¾)

SC-1, 28 NOV 2024 to 26 DEC 2024

SC-1, 28 NOV 2024 to 26 DEC 2024