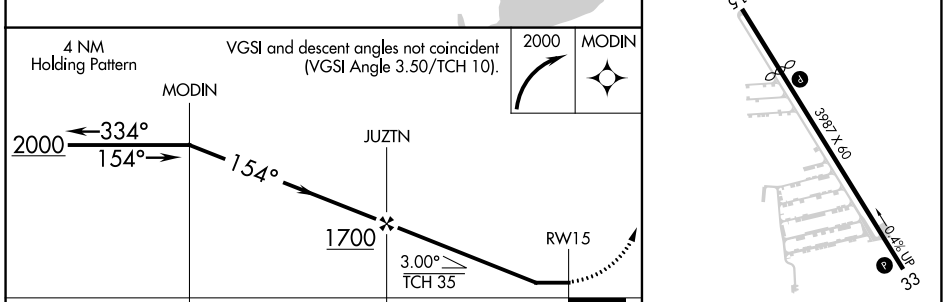
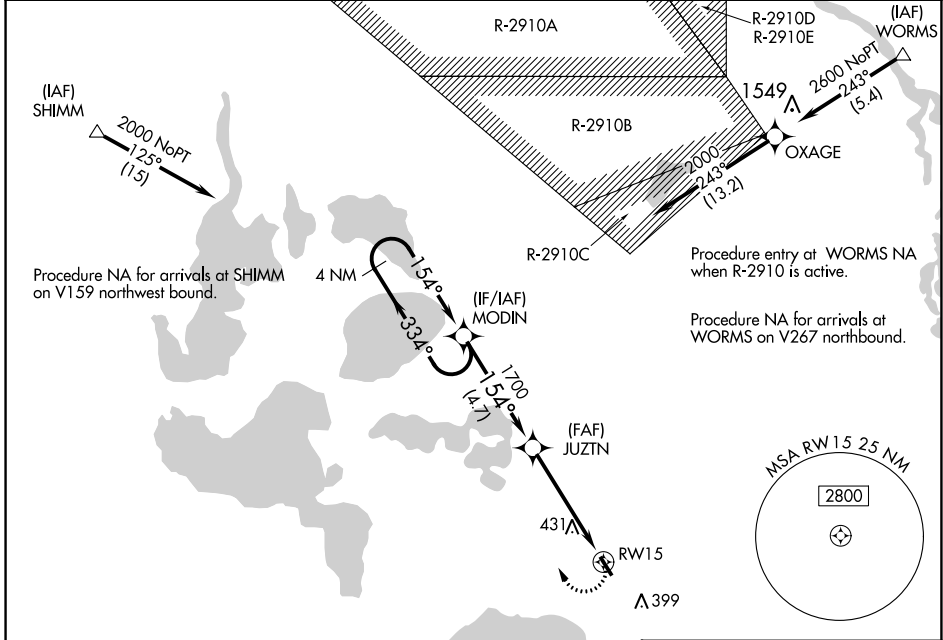


APP CRS <b>154°</b>	Rwy Idg TDZE Apt Elev	<b>N/A</b> <b>N/A</b> <b>150</b>
------------------------	-----------------------------	--

**RNAV (GPS)-A**  
ORLANDO APOPKA (X04)

<p><b>▼</b> DME/DME RNP-0.3 NA. Procedure NA at night. Visibility reduction by helicopters NA. Use Leesburg Intl altimeter setting; when not received, use Executive altimeter setting.</p> <p><b>▲</b> NA</p>	<p><b>MISSED APPROACH:</b> Climbing right turn to 2000 direct MODIN and hold.</p>
--	---

<p>LEE ASOS <b>134.325</b></p>	<p>ORLANDO APP CON <b>135.3 351.9</b></p>	<p>UNICOM <b>123.05</b> (CTAF) <b>①</b></p>
------------------------------------	---	---



CATEGORY	A	B	C	D
CIRCLING	780-1 630 (700-1)	840-1 690 (700-1)	NA	

SE-3, 28 NOV 2024 to 26 DEC 2024

SE-3, 28 NOV 2024 to 26 DEC 2024