

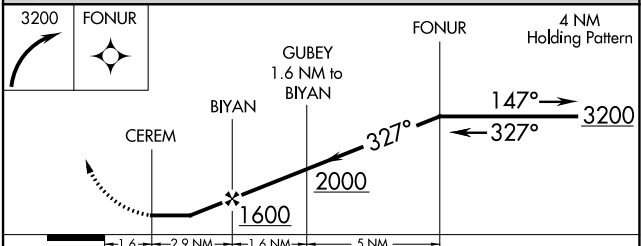
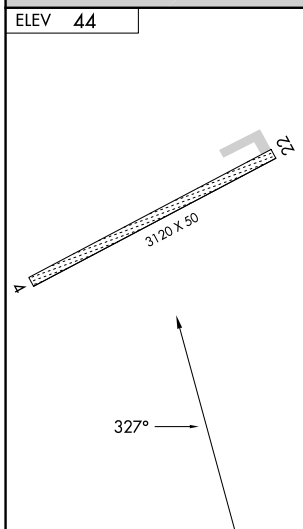
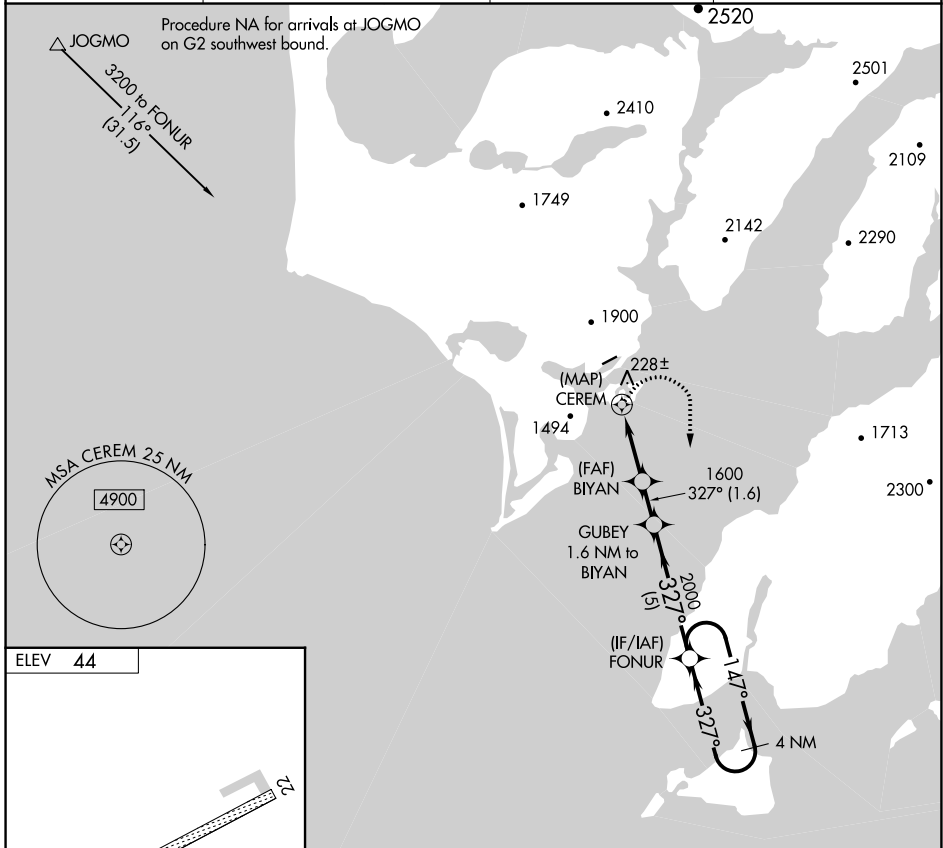
APP CRS 327°	Rwy Idg TDZE Apt Elev	N/A N/A 44
------------------------	-----------------------------	---------------------------------------

RNAV (GPS)-A

AKHIOK (AKK) (PAKH)

<p>▼ DME/DME RNP-0.3 NA. Procedure NA at night. ▲ Circling NA northwest of Rwy 4/22.</p>	<p>MISSED APPROACH: Climbing right turn to 3200 direct FONUR WP and hold.</p>
--	---

AWOS-3P 118.325	ANCHORAGE CENTER 125.1 281.4	KENAI RADIO 122.6	UNICOM 122.8 (CTAF)
---------------------------	--	-----------------------------	-------------------------------



CATEGORY	A	B	C	D
CIRCLING	620-2 576 (600-2)	1360-2 1316 (1400-2)	NA	

AK, 31 OCT 2024 to 26 DEC 2024

AK, 31 OCT 2024 to 26 DEC 2024