

APP CRS	Rwy Idg	<b>4003</b>
<b>265°</b>	TDZE	<b>10</b>
	Apt Elev	<b>14</b>

# RNAV (GPS) RWY 26

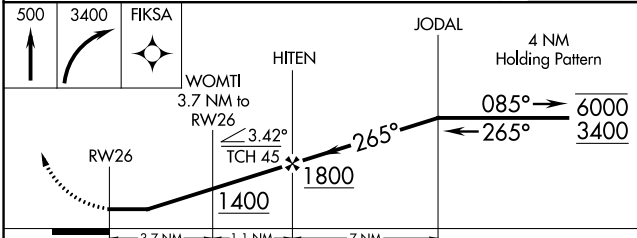
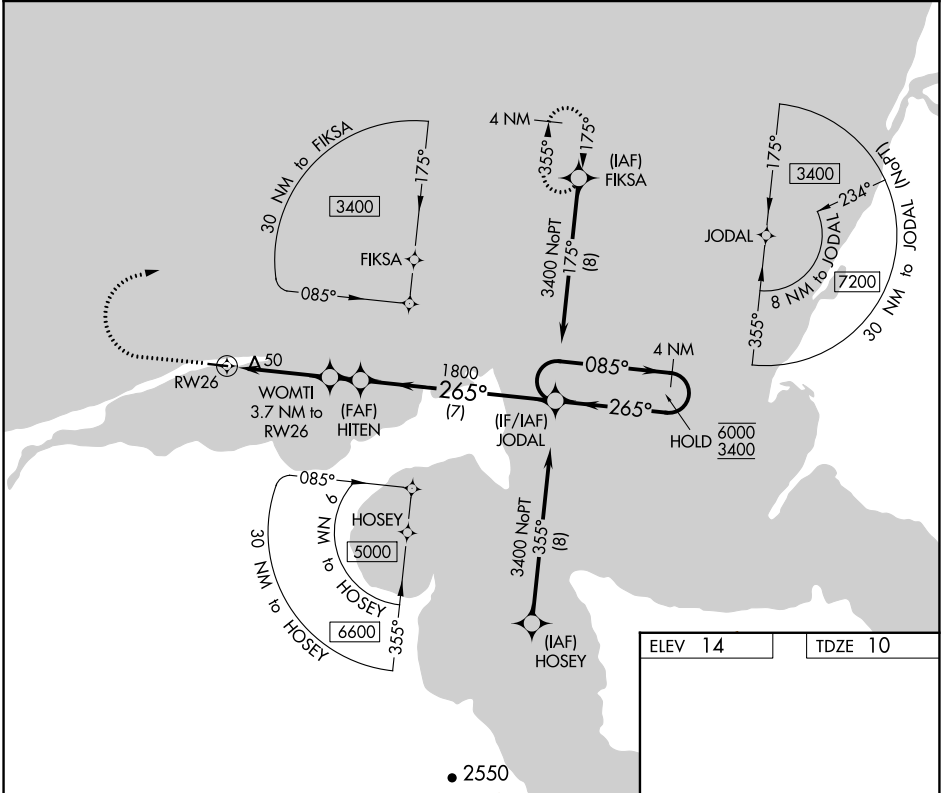
NELSON LAGOON (OUL) (PAOU)

**RNP APCH.**

▼ Procedure NA at night.  
Rwy 26 helicopter visibility reduction below 1 SM NA.

MISSED APPROACH: Climb to 500, then climbing right turn to 3400 direct FIKSA and hold. Continue climb in hold to 3400.

AWOS-3P <b>119,025</b>	ANCHORAGE CENTER <b>118.5 278.3</b>	CTAF <b>122.9 0</b>
---------------------------	--	------------------------



ELEV 14	TDZE 10
MRL Rwy 8-26 0	

CATEGORY	A	B	C	D
RNAV MDA	300-1 290 (300-1)			
CIRCLING	520-1	506 (600-1)	520-1½ 506 (600-1½)	580-2 566 (600-2)

AK, 31 OCT 2024 to 26 DEC 2024

AK, 31 OCT 2024 to 26 DEC 2024