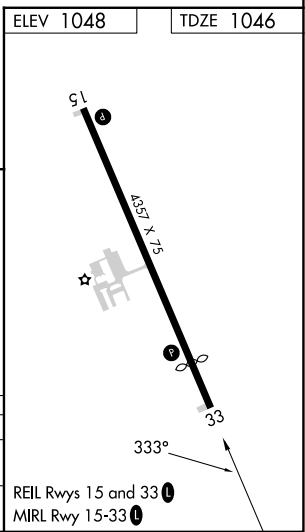
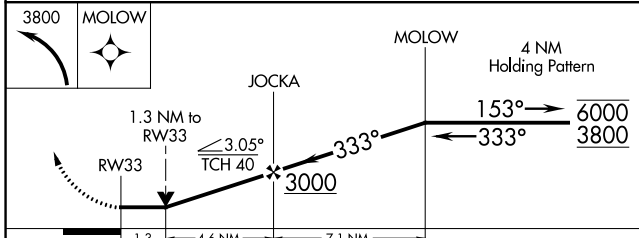
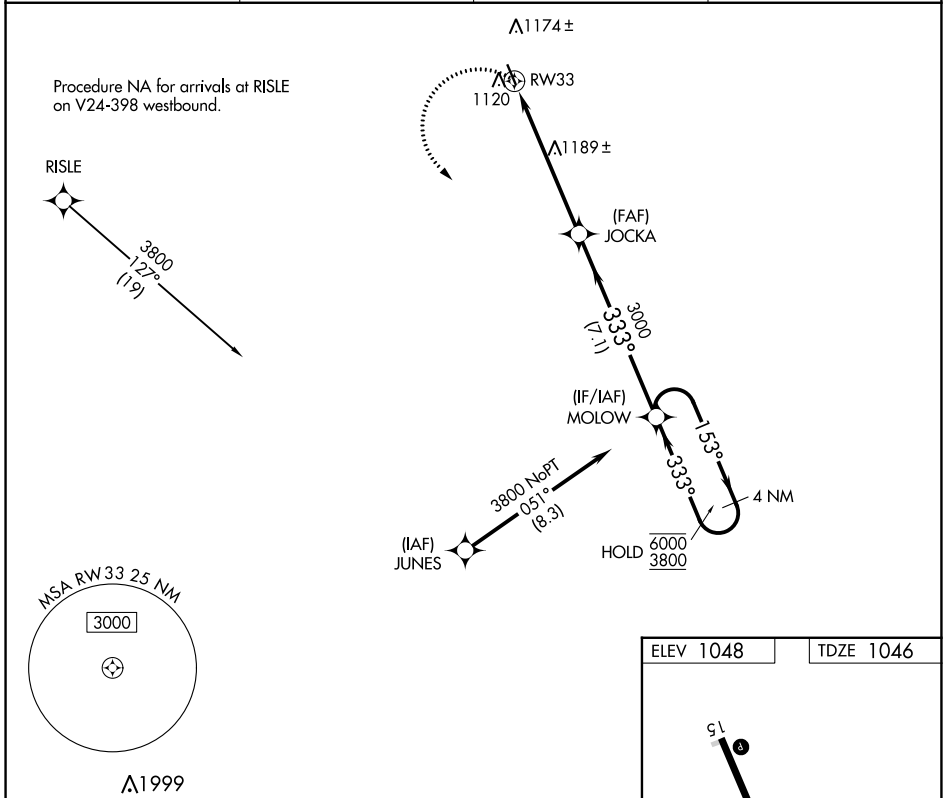


APP CRS 333°	Rwy Idg 3715
	TDZE 1046
	Apt Elev 1048

RNAV (GPS) RWY 33

GRANITE FALLS MUNI/LENZEN-ROE-FAGEN MEML FLD (GDB)

RNP APCH.		MISSED APPROACH: Climbing left turn to 3800 direct to MOLOW and hold.	
AWOS-3 120.1	MINNEAPOLIS CENTER 127.1 290.2	GCO 121.725	UNICOM 122.8 (CTAF) 0



CATEGORY	A	B	C	D
LNVA MDA	1480-1	434 (500-1)	1480-1½ 434 (500-1¼)	1480-1½ 434 (500-1½)
CIRCLING	1540-1 492 (500-1)	1580-1 532 (600-1)	1580-1½ 532 (600-1½)	1700-2 652 (700-2)

RNAV (GPS) RWY 33

NC-1, 28 NOV 2024 to 26 DEC 2024

NC-1, 28 NOV 2024 to 26 DEC 2024