

WAAS CH <b>69507</b> <b>W06A</b>	APP CRS <b>059°</b>	Rwy Idg <b>3998</b> TDZE <b>132</b> Apt Elev <b>132</b>
--	------------------------	---

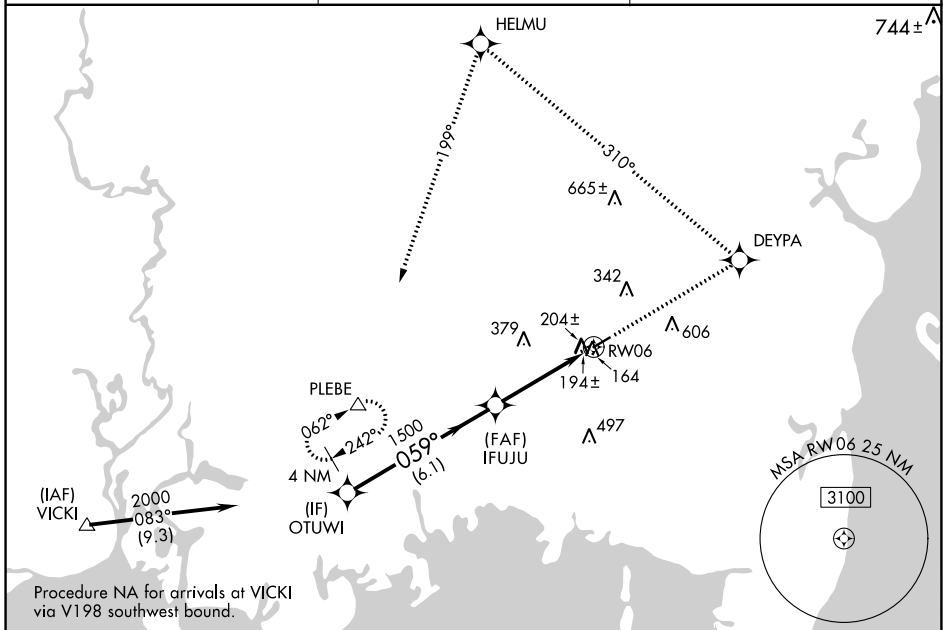
# RNAV (GPS) RWY 6

ST ELMO (2R.5)

**NA** DME/DME RNP-0.3 NA. Visibility reduction by helicopters NA. Use Mobile Rgnl altimeter setting; when not received use Pascagoula altimeter setting and increase DA to 483 feet and all MDA 20 feet.

**MISSED APPROACH:** Climb to 2000 direct DEYPA and left turn via 310° track to HELMU and left turn via 199° track to PLEBE and hold.

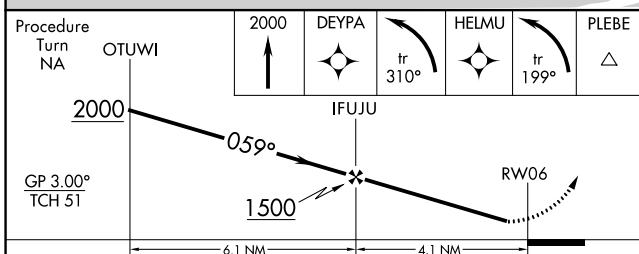
MOBILE APP CON ★ <b>121.0 307.1</b>	HOUSTON CENTER <b>127.65 285.475</b>	CTAF <b>122.90</b>
--	---	-----------------------



SE-4, 28 NOV 2024 to 26 DEC 2024

SE-4, 28 NOV 2024 to 26 DEC 2024

ELEV 132	TDZE 132
----------	----------



CATEGORY	A	B	C	D
LPV DA	475-1¼	343 (400-1¼)		NA
LNAV MDA	540-1	408 (500-1)	540-1¼ 408 (500-1¼)	NA
CIRCLING	720-1	588 (600-1)	960-2½ 828 (900-2½)	NA

