

WAAS CH 99437 W13A	APP CRS 124°	Rwy Idg 3300 TDZE 993 Apt Elev 993
----------------------------------------	------------------------	---------------------------------------------------------------

RNAV (GPS) RWY 13

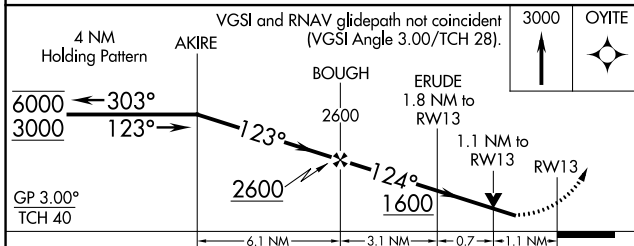
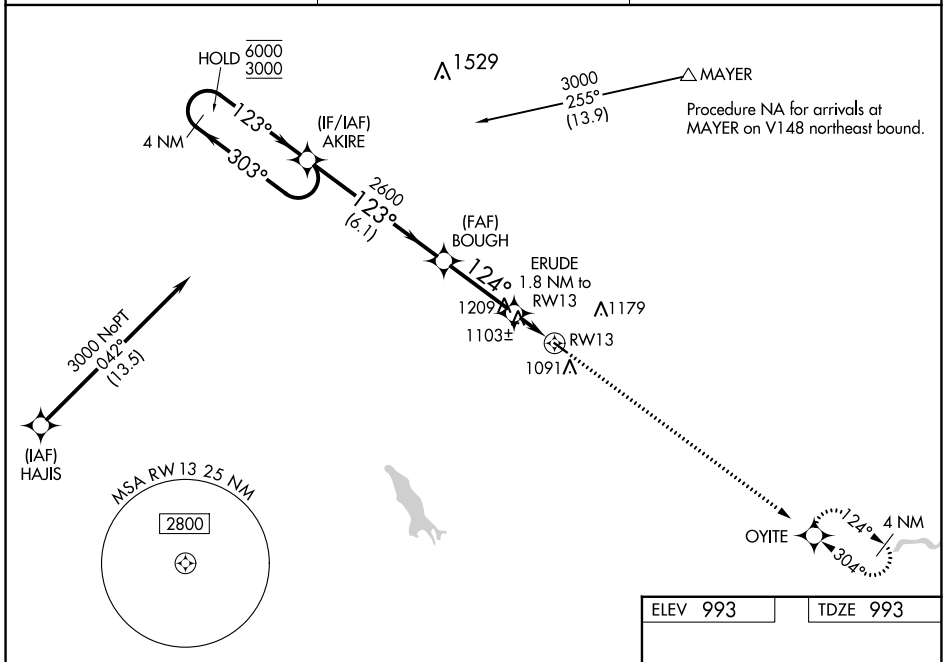
GLENCOE MUNI (GYL)

RNP APCH - GPS.

⚠ For uncompensated Baro-VNAV systems, LNAV/VNAV NA below -16°C or above 54°C. Baro-VNAV and VDP NA when using Hutchinson altimeter setting. Rwy 13 helicopter visibility reduction below 3/4 SM NA. When local altimeter setting not received, use Hutchinson altimeter setting; increase LPV DA to 1317; increase LNAV/VNAV DA to 1403; and increase all MDA 60 feet.

MISSED APPROACH: Climb to 3000 direct OYITE and hold.

AWOS-3 119.625	MINNEAPOLIS APP CON 134.7 284.7	UNICOM 122.8 (CTAF) 0
--------------------------	-------------------------------------------	---------------------------------



ELEV 993	TDZE 993
----------	----------

REIL Rws 13 and 31 0
MIRL Rwy 13-31 0

CATEGORY	A	B	C	D
LPV DA	1274-1	281 (300-1)		NA
LNAV/VNAV DA	1360-1	367 (400-1)		NA
LNAV MDA	1360-1	367 (400-1)		NA
CIRCLING	1420-1 427 (500-1)	1480-1 487 (500-1)		NA

NC-1, 28 NOV 2024 to 26 DEC 2024

NC-1, 28 NOV 2024 to 26 DEC 2024