

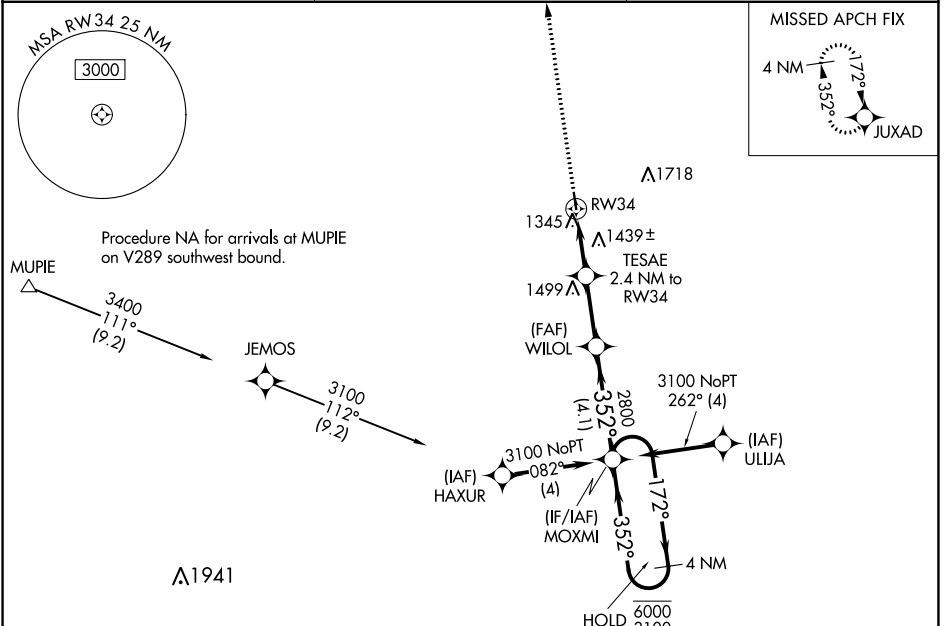
WAAS CH 72728 W34A	APP CRS 352°	Rwy Idg TDZE Apt Elev	3500 1191 1195
--	------------------------	-----------------------------	---

RNAV (GPS) RWY 34

HOUSTON MEML (M48)

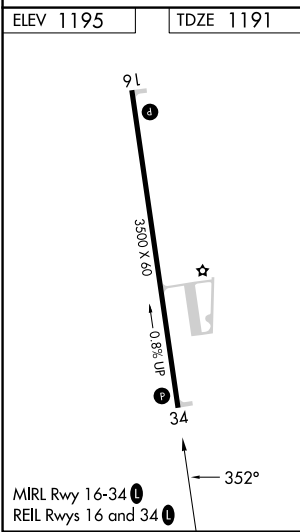
RNP APCH-GPS.	MISSED APPROACH: Climb to 3400 direct JUXAD and hold.
<p>Baro-VNAV NA. Use Fort Leonard Wood altimeter setting, when not received use West Plains altimeter setting.</p>	

TBN ASOS 118.7 229.4	KANSAS CITY CENTER 128.35 284.675	CTAF 122.9 0
--------------------------------	---	------------------------



NC-3, 28 NOV 2024 to 26 DEC 2024

NC-3, 28 NOV 2024 to 26 DEC 2024



3400 JUXAD	VGSI and RNAV glidepath not coincident (VGSI Angle 4.00/TCH 41).		MOXMI	4 NM Holding Pattern
↑	WILOL	2800	172° → 6000	← 352° 3100
	TESAE 2.4 NM to RW34	1980	2800	GP 3.00° TCH 40
	2.4 NM	2.6 NM	4.1 NM	
RW34				
CATEGORY	A	B	C	D
LPV DA	1509-1	318 (400-1)		NA
LNAV/VNAV DA	1740-1 5/8	549 (600-1 5/8)		NA
LNAV MDA	1740-1	549 (600-1)		NA
CIRCLING	1760-1	1880-1		NA
	565 (600-1)	685 (700-1)		