

APP CRS 169°	Rwy Idg 4000
	TDZE 323
	Apt Elev 323

RNAV (GPS) RWY 17

SMITHVILLE CRAWFORD MUNI (84R)

RNP APCH - GPS.

▽ Rwy 17 helicopter visibility reduction below 1 SM NA.
▲ NA Straight-in Rwy 17 NA at night, Circling Rwy 17 NA at night.

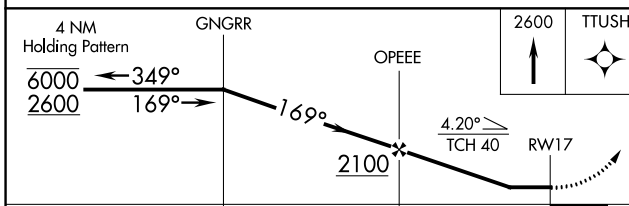
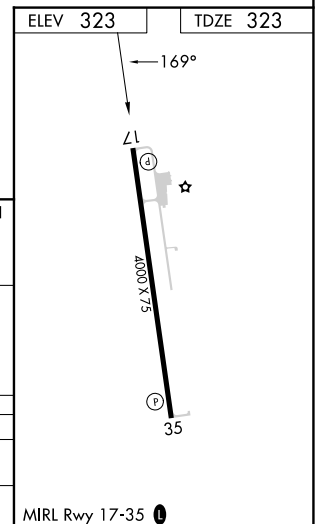
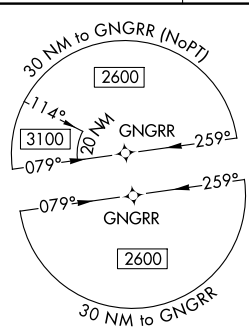
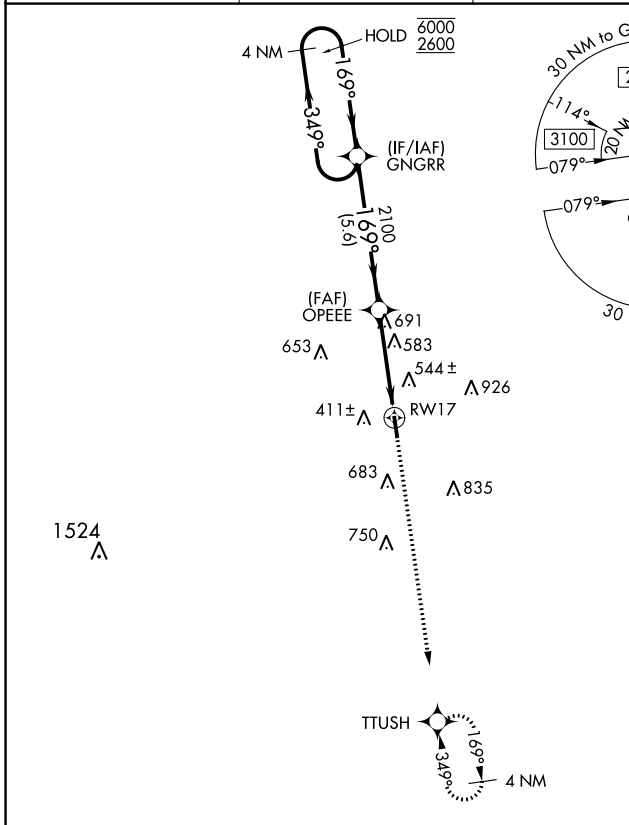
MISSED APPROACH: Climb to 2600 direct TTUSH and hold.

GYB AWOS-3
119.225

AUSTIN APP CON
120.875 270.25

CTAF
122.9

123.30



CATEGORY	A	B	C	D
RNAV MDA	900-1	577 (600-1)	NA	
CIRCLING	960-1	637 (700-1)	NA	

SC-3, 28 NOV 2024 to 26 DEC 2024

SC-3, 28 NOV 2024 to 26 DEC 2024