

WAAS CH <b>70633</b> <b>W34A</b>	APP CRS <b>339°</b>	Rwy ldg TDZE <b>1364</b> Apt Elev <b>1368</b>
----------------------------------------	------------------------	-----------------------------------------------------

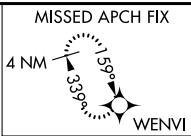
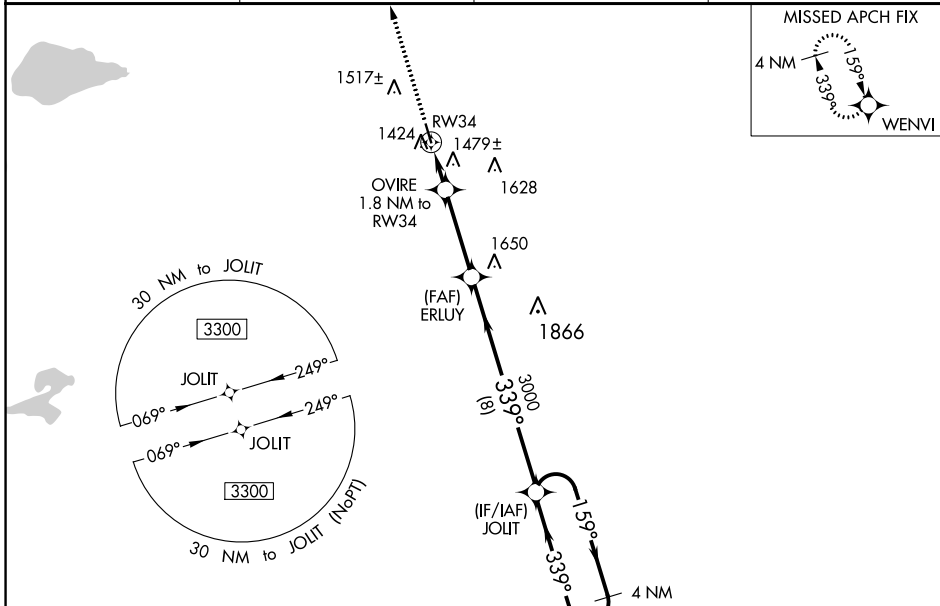
# RNAV (GPS) RWY 34

WADENA MUNI (ADC)

**⚠** DME/DME RNP-0.3 NA. VDP and Baro-VNAV NA with Staples altimeter setting. When local altimeter setting not received, use Staples altimeter setting and increase all DA 52 feet and all MDA 60 feet, increase LNAV/VNAV visibility 1/8 mile, LNAV Cat C visibility 1/4 mile and Circling Cat C visibility 1/4 mile. For uncompensated Baro-VNAV systems, LNAV/VNAV NA below -17°C (1°F) or above 54°C (130°F).

MISSED APPROACH: Climb to 3300 direct WENVI and hold.

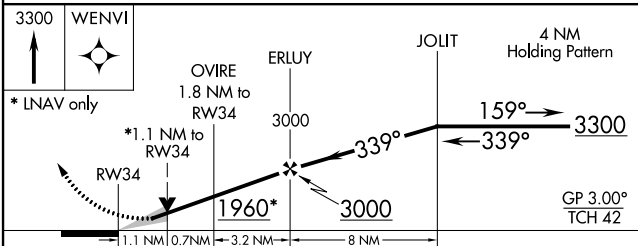
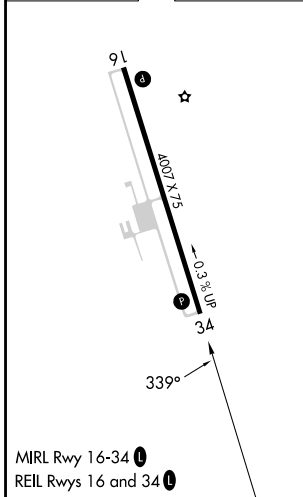
AWOS-3PT <b>118.875</b>	MINNEAPOLIS CENTER <b>126.1 269.2</b>	GCO <b>121.725</b>	UNICOM <b>122.8 (CTAF) 0</b>
----------------------------	------------------------------------------	-----------------------	---------------------------------



NC-1, 28 NOV 2024 to 26 DEC 2024

NC-1, 28 NOV 2024 to 26 DEC 2024

ELEV 1368	TDZE 1364
-----------	-----------



CATEGORY	A	B	C	D
LPV DA	1614-1		250 (300-1)	NA
LNAV/VNAV DA	1791-1½		427 (500-1½)	NA
LNAV MDA	1740-1	376 (400-1)	1740-1½ 376 (400-1½)	NA
<b>C</b> CIRCLING	1780-1 412 (500-1)	1820-1 452 (500-1)	1940-1½ 572 (600-1½)	NA