

WAAS CH 63022 W06A	APP CRS 067°	Rwy Idg TDZE Apt Elev	5500 665 665
--	------------------------	-----------------------------	---

RNAV (GPS) RWY 6

SANDUSKY COUNTY RGNL (S24)

RNP APCH.

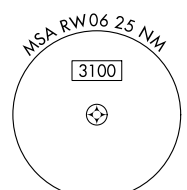
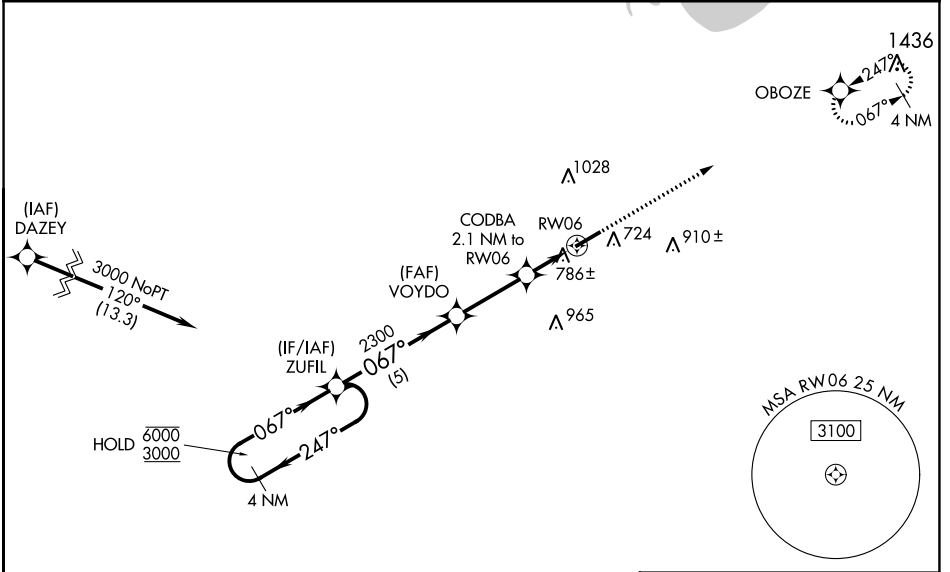
NA Baro-VNAV and VDP NA when using Toledo Express altimeter setting. For uncompensated Baro-VNAV systems, LNAV/VNAV NA below -16°C or above 54°C. When local altimeter setting not received, use Toledo Express altimeter setting: increase LPV DA to 1008 feet and all visibilities 3/8 SM; increase LNAV/VNAV DA to 1041 feet and all visibilities 3/8 SM; increase all MDA 100 feet and LNAV visibility Cat C and D 3/8 SM and Circling visibility Cat C and D 1/2 SM.

MISSED APPROACH:
Climb to 3000 direct
OBOZE and hold.

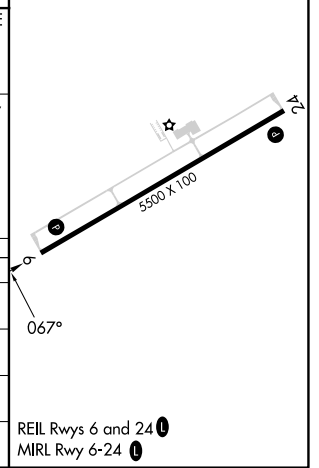
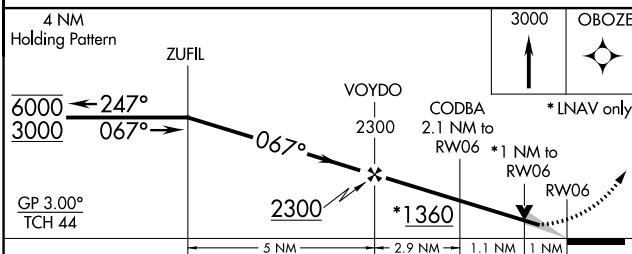
AWOS-3P
119.575

TOLEDO APP CON
126.1 307.0

UNICOM
123.05 (CTAF) 0



ELEV 665	TDZE 665
----------	----------



CATEGORY	A	B	C	D
LPV DA		915-3/4	250 (300-3/4)	
LNAV/VNAV DA		948-7/8	283 (300-7/8)	
LNAV MDA		1040-1	375 (400-1)	
C CIRCLING	1120-1 455 (500-1)	1160-1 495 (500-1)	1380-2 715 (800-2)	1380-2 1/4 715 (800-2 1/4)

REIL Rwys 6 and 24 **0**
MIRL Rwy 6-24 **0**