

WAAS CH <b>53633</b> <b>W17A</b>	APP CRS <b>176°</b>	Rwy Idg TDZE <b>1623</b> Apt Elev <b>1623</b>	<b>3005</b>
--	------------------------	---	-------------

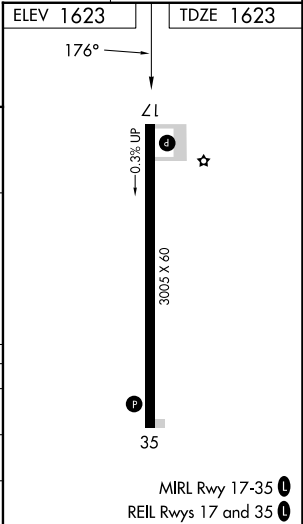
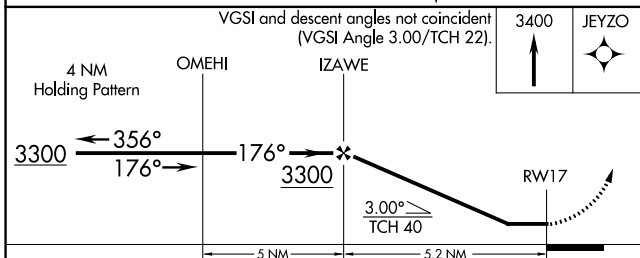
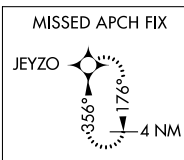
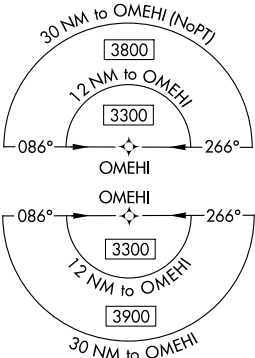
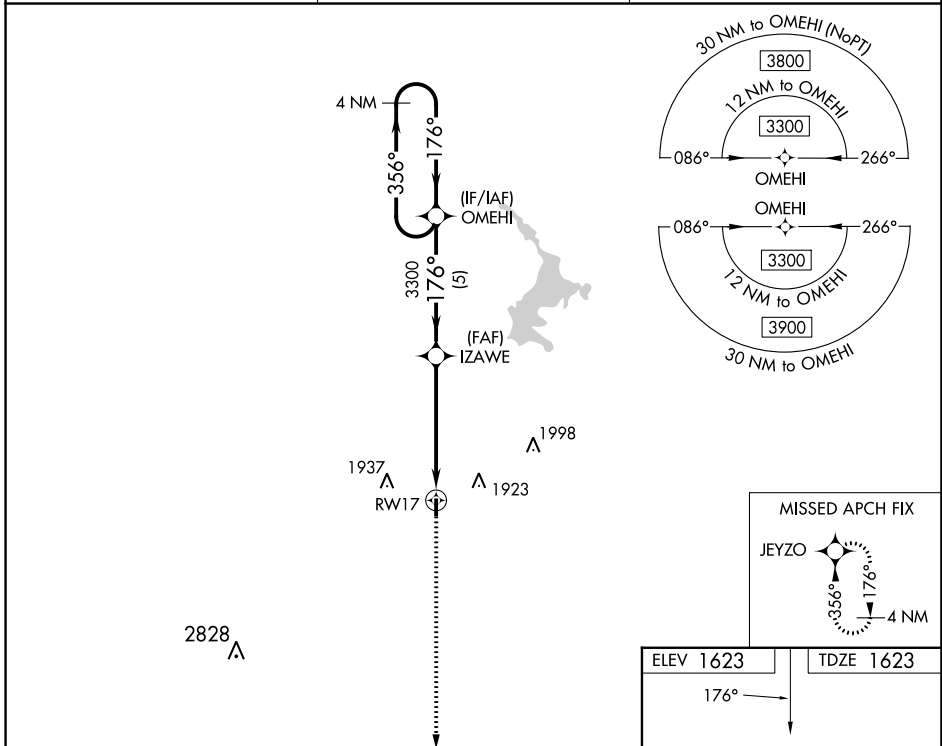
# RNAV (GPS) RWY 17

SLAYTON MUNI (DVP)

**⚠** When local altimeter setting not received, use Tracy Muni altimeter setting and increase all MDAs 80 feet. DME/DME RNP-0.3 NA. Procedure NA at night. Helicopter visibility reduction below 1 SM NA.

MISSED APPROACH: Climb to 3400 direct JEYZO and hold.

AWOS-3 <b>118.55</b>	MINNEAPOLIS CENTER <b>132.05 317.4</b>	CTAF <b>122.9 0</b>
-------------------------	---	------------------------



CATEGORY	A	B	C	D
LP MDA	2100-1	477 (500-1)		NA
LNAV MDA	2120-1	497 (500-1)		NA
<b>C</b> CIRCLING	2120-1 497 (500-1)	2300-1 677 (700-1)		NA

NC-1, 28 NOV 2024 to 26 DEC 2024

NC-1, 28 NOV 2024 to 26 DEC 2024

MIRL Rwy 17-35 **0**  
REIL Rwy 17 and 35 **0**