

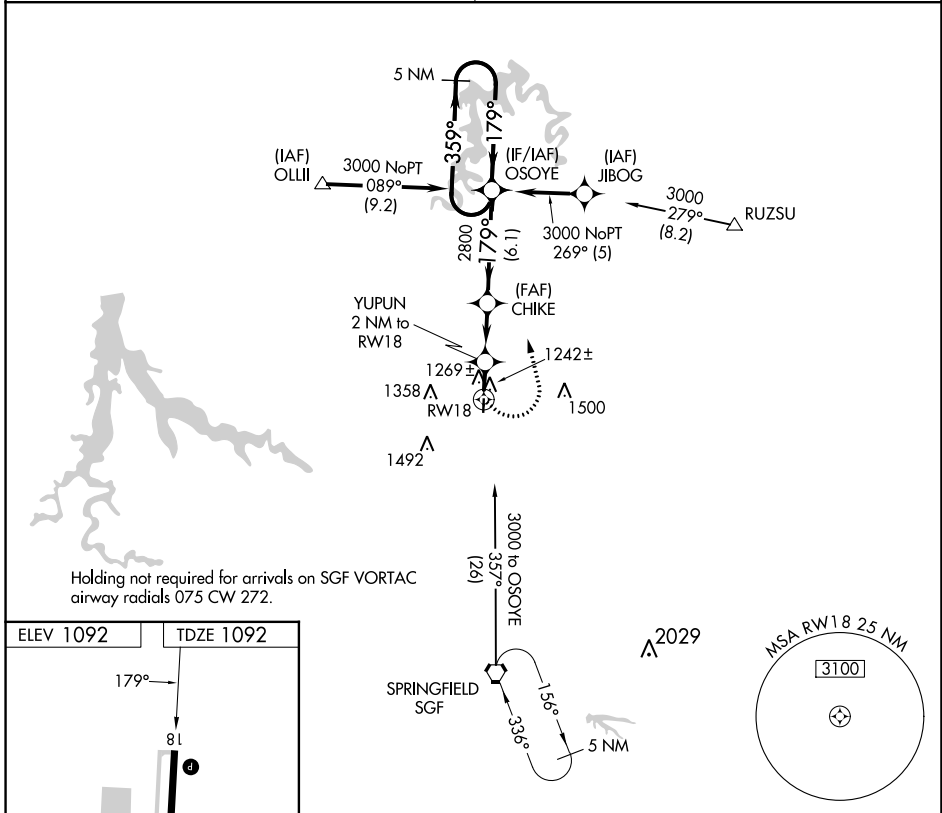
APP CRS	Rwy Idg	<b>4000</b>
<b>179°</b>	TDZE	<b>1092</b>
	Apt Elev	<b>1092</b>

# RNAV (GPS) RWY 18

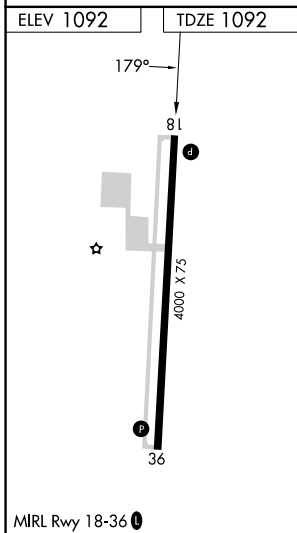
BOLIVAR MUNI (M17)

RNP APCH - GPS.	MISSED APPROACH: Climbing left turn to 3000 direct OSOYE and hold.
<p>▼ Rwy 18 helicopter visibility reduction below 1 SM NA.</p> <p>▲ NA Use Springfield-Branson Ntl altimeter setting. Straight-in and Circling Rwy 18 NA at night.</p>	

<p>SPRINGFIELD APP CON</p> <p><b>124.95 318.2</b></p>	<p>UNICOM</p> <p><b>123.0 (CTAF) 1</b></p>
---	--



Holding not required for arrivals on SGF VORTAC airway radials 075 CW 272.



3000 OSOYE	VGS1 and descent angles not coincident (VGS1 Angle 3.75/TCH 40).		5 NM Holding Pattern	
	<p>YUPUN 2 NM to RWY 18</p> <p>CHIKE</p> <p>OSOYE</p> <p>3000</p>	<p>1760</p> <p>2800</p> <p>179°</p> <p>359°</p> <p>179°</p>	<p>3.04° TCH 38</p>	
	2 NM	3.2 NM	6.1 NM	
CATEGORY	A	B	C	D
LNAV MDA	1600-1	508 (600-1)	1600-1 <sup>3</sup> / <sub>8</sub> 508 (600-1 <sup>3</sup> / <sub>8</sub> )	NA
CIRCLING	1660-1	568 (600-1)	1740-1 <sup>3</sup> / <sub>4</sub> 648 (700-1 <sup>3</sup> / <sub>4</sub> )	NA