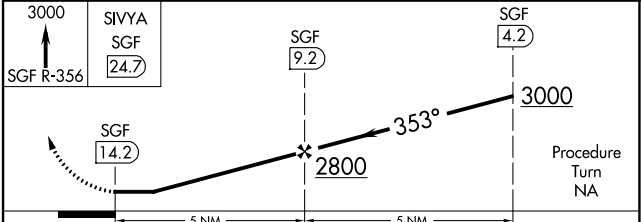
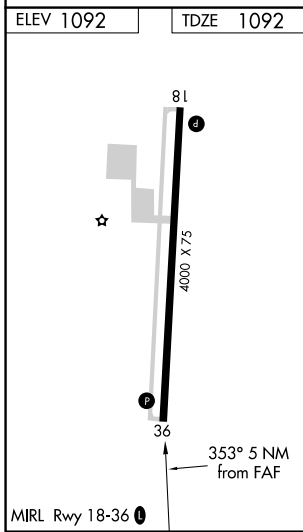
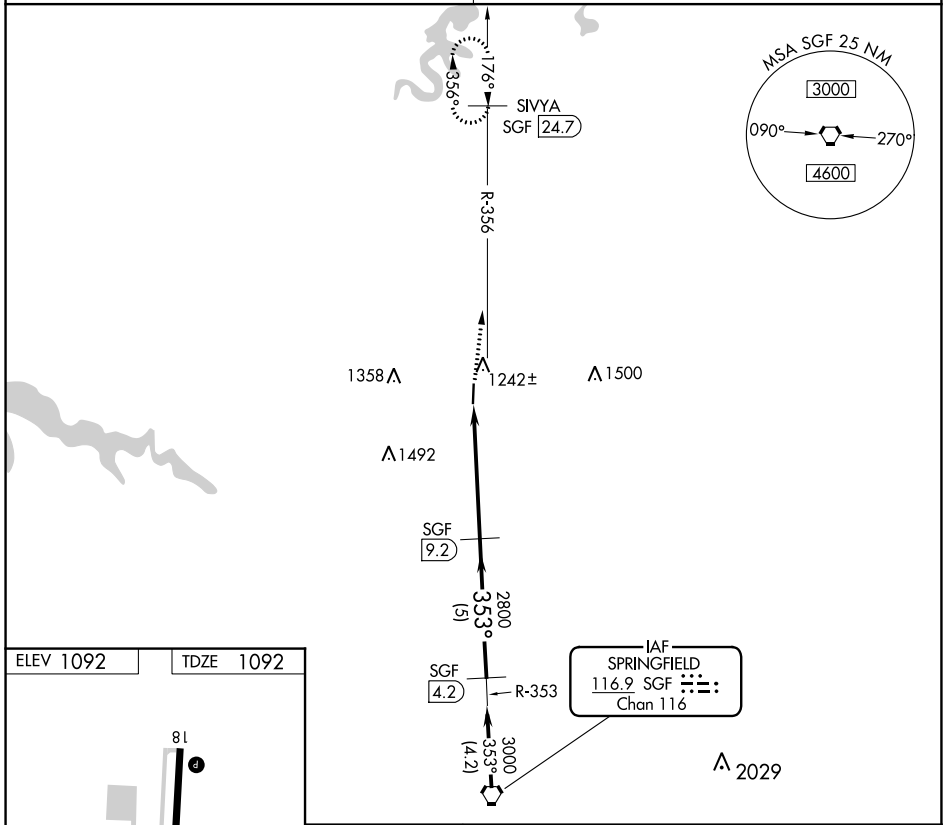


VORTAC SGF 116.9 Chan 116	APP CRS 353°	Rwy Idg TDZE Apt Elev	4000 1092 1092
---	------------------------	-----------------------------	---

VOR/DME RWY 36

BOLIVAR MUNI (M17)

<p>NA Use Springfield-Branson Ntl altimeter setting. Circling Rwy 18 NA at night.</p>	<p>MISSED APPROACH: Climb to 3000 via SGF R-356 to SIVYA/SGF 24.7 DME and hold.</p>
<p>SPRINGFIELD APP CON 124.95 318.2</p>	<p>UNICOM 123.0 (CTAF) 0</p>



CATEGORY	A	B	C	D
S-36	1700-1	608 (700-1)		NA
C CIRCLING	1700-1	608 (700-1)		NA

NC-3, 28 NOV 2024 to 26 DEC 2024

NC-3, 28 NOV 2024 to 26 DEC 2024