

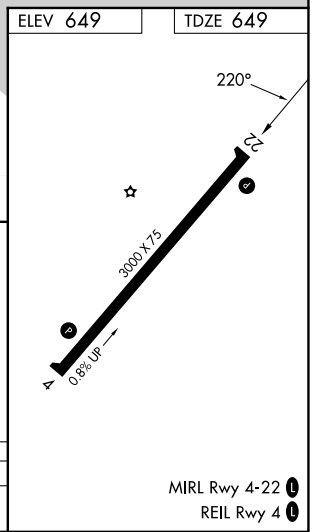
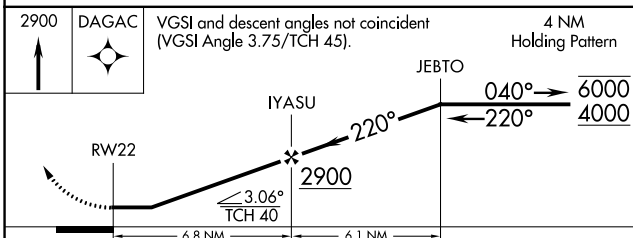
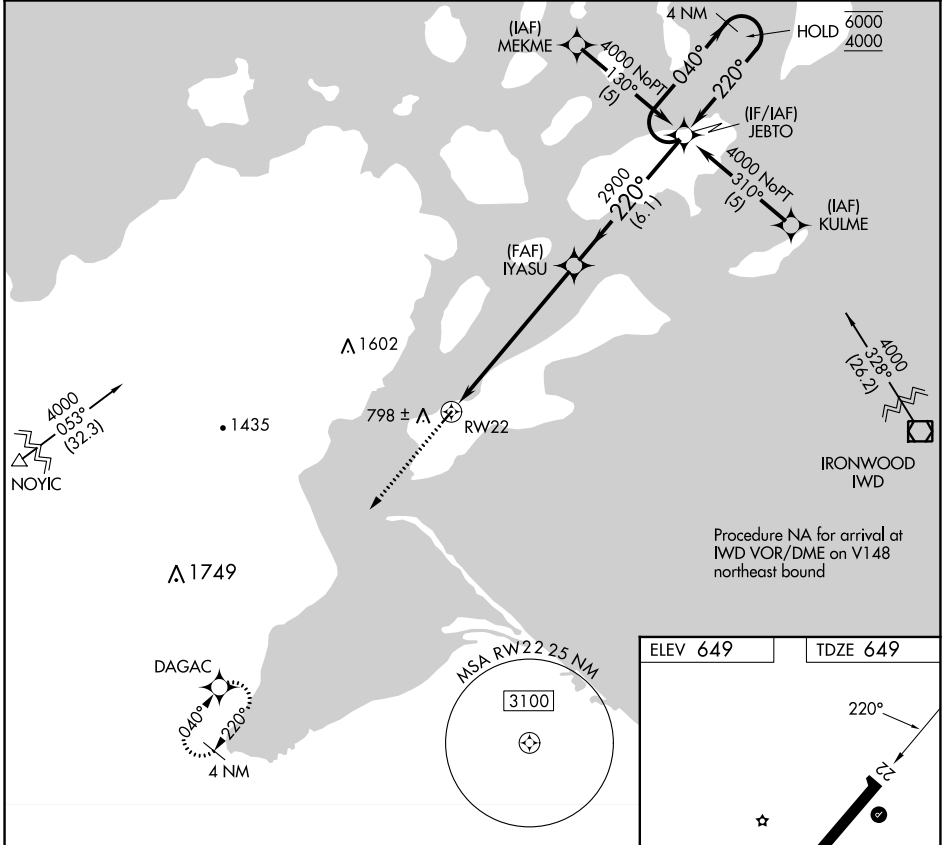
APP CRS	Rwy Idg	3000
220°	TDZE	649
	Apt Elev	649

RNAV (GPS) RWY 22

MAJOR GILBERT FLD (4R5)

RNP APCH.	MISSED APPROACH: Climb to 2900 direct DAGAC and hold.
▼ Rwy 22 helicopter visibility reduction below 1 SM NA. Procedure NA at night.	

AWOS-3PT 119.375	MINNEAPOLIS APP CON 133.55	CTAF 122.9 0
----------------------------	--------------------------------------	------------------------



CATEGORY	A	B	C	D
LNAV MDA	1300-1	651 (700-1)	1300-1 1/8 651 (700-1 1/8)	NA

EC-3, 28 NOV 2024 to 26 DEC 2024

EC-3, 28 NOV 2024 to 26 DEC 2024