

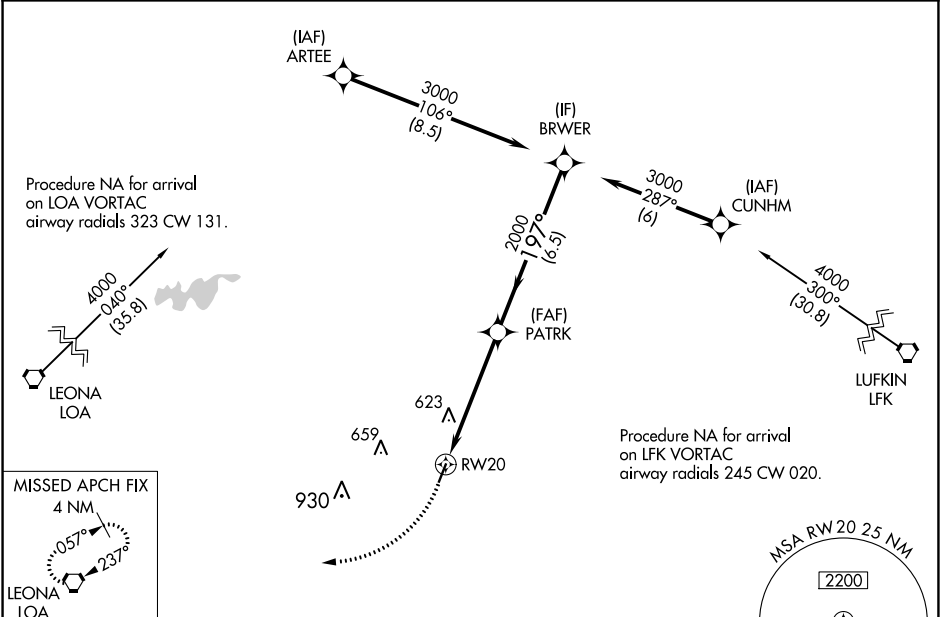
WAAS CH 65826 W20A	APP CRS 197°	Rwy Idg TDZE Apt Elev	4000 348 348
--	------------------------	-----------------------------	---

RNAV (GPS) RWY 20

HOUSTON COUNTY (DKR)

RNP APCH.	MISSED APPROACH: Climbing right turn to 4000 direct LOA VORTAC and hold.
Procedure NA at night. Rwy 20 helicopter visibility reduction below 1 SM NA.	

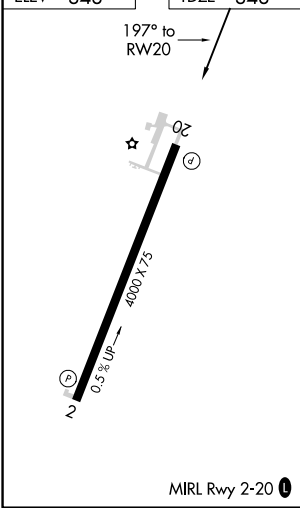
AWOS-3PT 118.775	HOUSTON CENTER 134.8 269.6	CTAF 122.9
----------------------------	--------------------------------------	----------------------



SC-5, 28 NOV 2024 to 26 DEC 2024

SC-5, 28 NOV 2024 to 26 DEC 2024

ELEV 348	TDZE 348
----------	----------



4000 LOA		Visual Segment - Obstacles.			
RW20		PATRK		BRWR	
5.1 NM		6.5 NM			
CATEGORY	A	B	C	D	
LP MDA	880-1	532 (600-1)		NA	
LNAV MDA	900-1	552 (600-1)		NA	
CIRCLING	900-1	980-1	632 (700-1)		NA