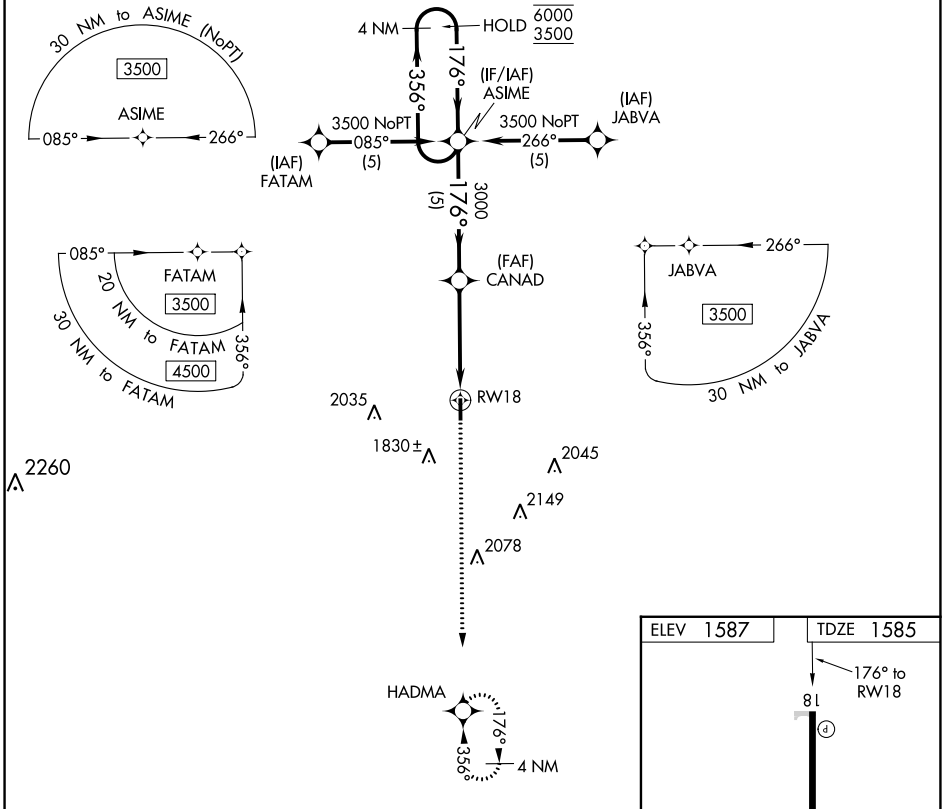


APP CRS	Rwy Idg	4001
176°	TDZE	1585
	Apt Elev	1587

RNAV (GPS) RWY 18

HINTON MUNI (208)

RNP APCH-GPS.		MISSED APPROACH: Climb to 3600 direct HADMA and hold.
▽ NA	Baro-VNAV NA. Use Weatherford altimeter setting.	
OJA AWOS-3PT 118.575	FORT WORTH CENTER 128.4 269.37	UNICOM 123.05 (CTAF) 0



SC-1, 28 NOV 2024 to 26 DEC 2024

SC-1, 28 NOV 2024 to 26 DEC 2024

4 NM Holding Pattern	ASIME	3600 HADMA
6000 ← 356°	→ 176°	↑
3500	→ 176°	☉
GP 3.03°	CANAD	
TCH 42	3000	RWY 18
	5 NM	4.3 NM

