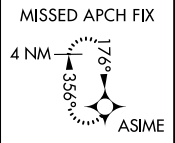
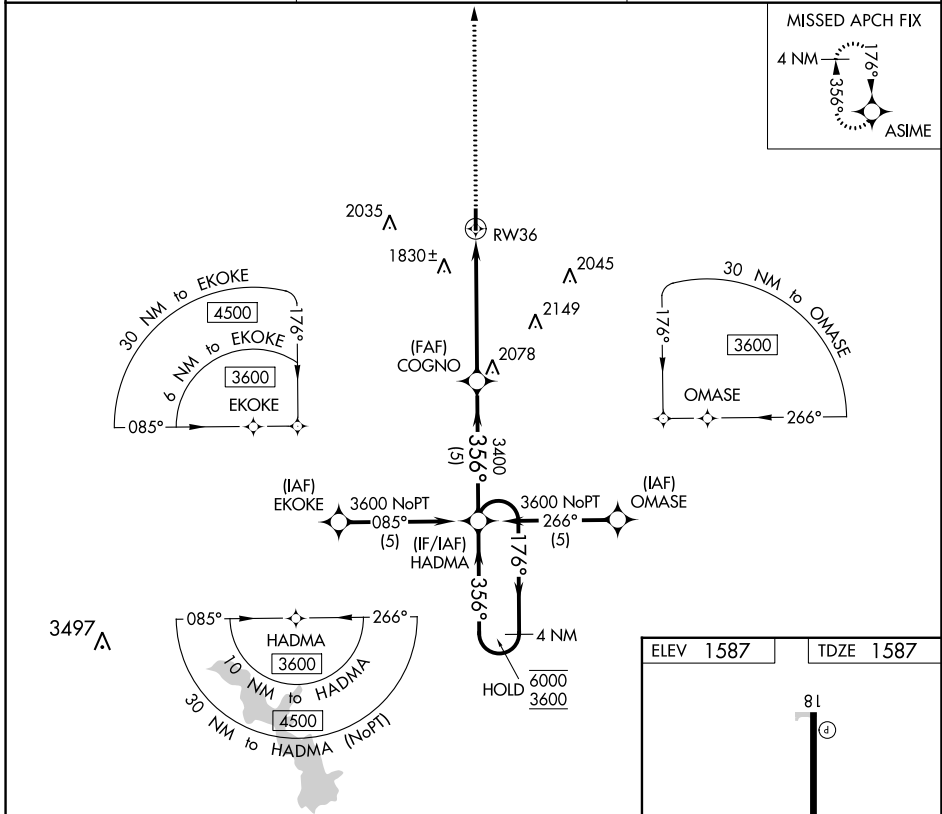


APP CRS	Rwy Idg	<b>4001</b>
<b>356°</b>	TDZE	<b>1587</b>
	Apt Elev	<b>1587</b>

# RNAV (GPS) RWY 36

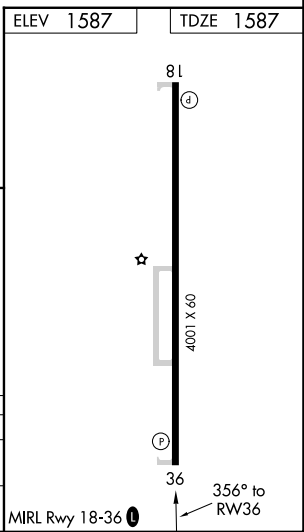
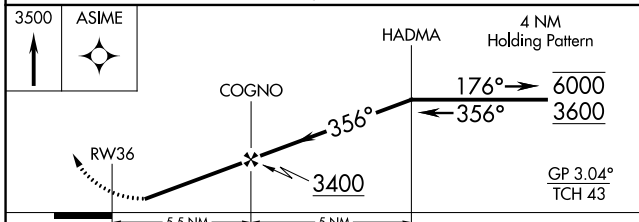
HINTON MUNI (208)

RNP APCH-GPS.		MISSED APPROACH: Climb to 3500 direct ASIME and hold.
<p><b>▽</b> Rwy 36 helicopter visibility reduction below 3/4 SM NA.  <b>△</b> NA Baro-VNAV NA. Use Weatherford altimeter setting.</p>		
OJA AWOS-3PT <b>118.575</b>	FORT WORTH CENTER <b>128.4 269.37</b>	UNICOM <b>123.05</b> (CTAF) <b>0</b>



SC-1, 28 NOV 2024 to 26 DEC 2024

SC-1, 28 NOV 2024 to 26 DEC 2024



CATEGORY	A	B	C	D
LNNAV/VNAV	DA 2211-1 3/4	624 (700-1 3/4)	NA	
LNNAV MDA	2220-1	633 (700-1)	NA	