

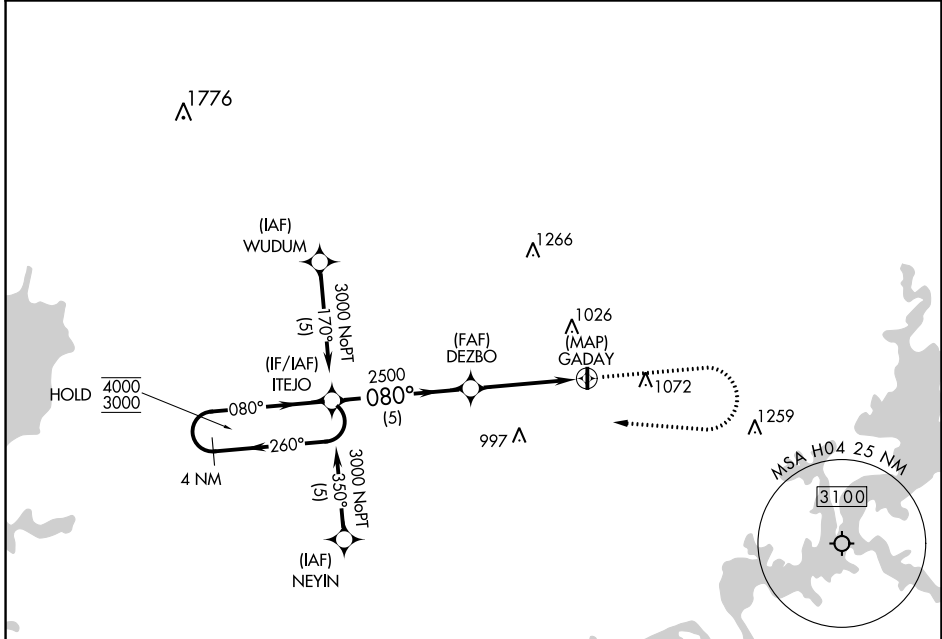
APP CRS 080°	Rwy Idg TDZE Apt Elev	N/A N/A 695
------------------------	-----------------------------	--

RNAV (GPS)-A

VINITA MUNI (H04)

RNP APCH - GPS.	MISSED APPROACH: Climb to 1200 then climbing right turn to 3000 direct ITEJO and hold.
▼ ▲ NA	Use Claremore altimeter setting.

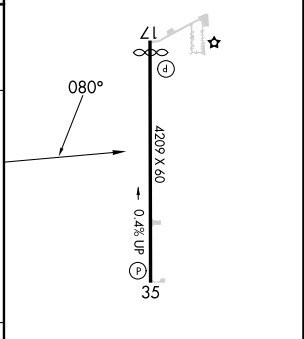
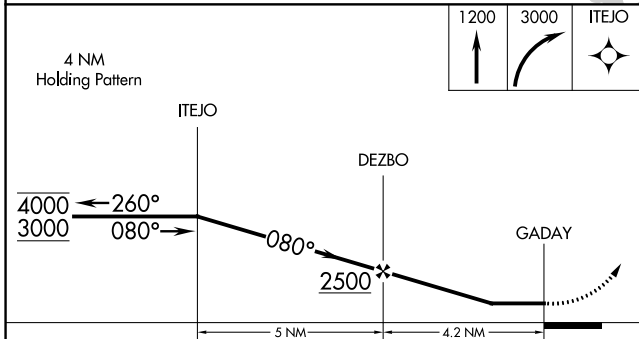
GCM AWOS-3P 119.925	KANSAS CITY CENTER 128.6 282.325	122.9 (CTAF) 0
-------------------------------	--	------------------------------



SC-1, 28 NOV 2024 to 26 DEC 2024

SC-1, 28 NOV 2024 to 26 DEC 2024

ELEV	695
------	-----



CATEGORY	A	B	C	D
CIRCLING	1460-1 765 (800-1)		NA	

MIRL Rwy 17-35 **0**