

WAAS CH 40031 W18A	APP CRS 183°	Rwy Idg TDZE Apt Elev	5001 286 286
--	------------------------	-----------------------------	---

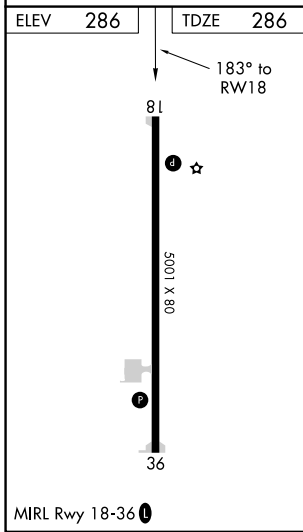
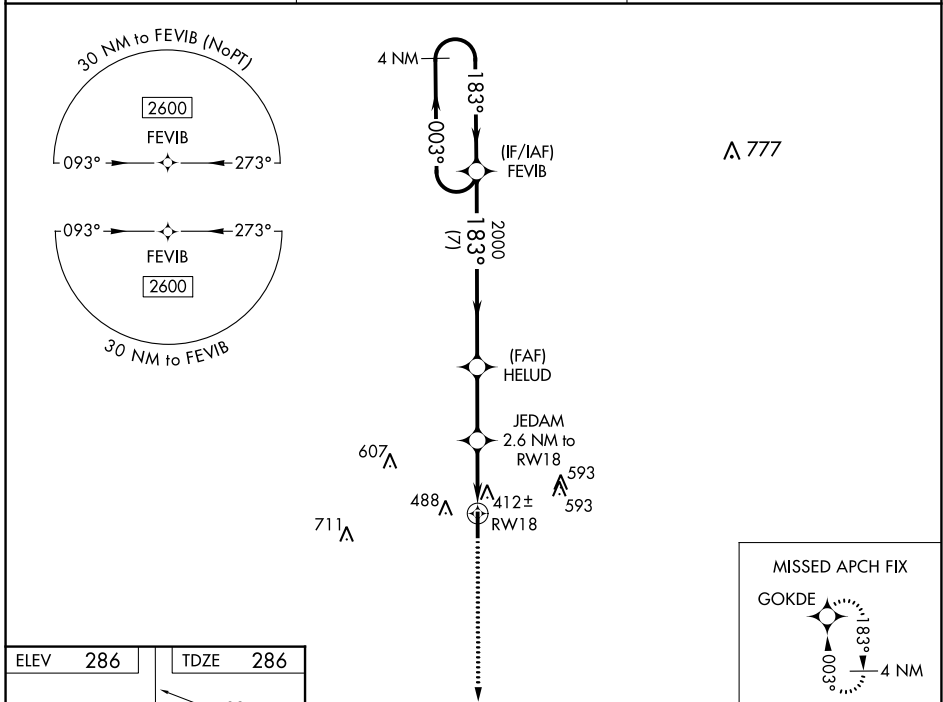
RNAV (GPS) RWY 18

ATMORE MUNI (ØR.1)

▽ Baro-VNAV NA. Helicopter visibility reduction below 1 SM NA. DME/DME RNP-0.3 NA.
△ NA Use Brewton altimeter setting.

MISSED APPROACH: Climb to 2600 direct GOKDE and hold.

12J AWOS-3PT 119.325	PENSACOLA APP CON 127.35 291.625	UNICOM 122.8 (CTAF) 0
--------------------------------	--	---------------------------------



2600 GOKDE VGS1 and RNAV glidepath not coincident (VGS1 Angle 3.00/TCH 40).

4 NM Holding Pattern

*LNAV only.

FEVIB

003° →

← 183°

2600

GP 3.00° TCH 52

CATEGORY	A	B	C	D
LPV DA		613-1	327 (400-1)	
LNAV/VNAV DA		653-1	367 (400-1)	
LNAV MDA	740-1	454 (500-1)	740-1 ³ / ₈	454 (500-1 ³ / ₈)
C CIRCLING	880-1	594 (600-1)	980-2 694 (700-2)	1000-2 ¹ / ₄ 714 (800-2 ¹ / ₄)

SE-4, 28 NOV 2024 to 26 DEC 2024

SE-4, 28 NOV 2024 to 26 DEC 2024