

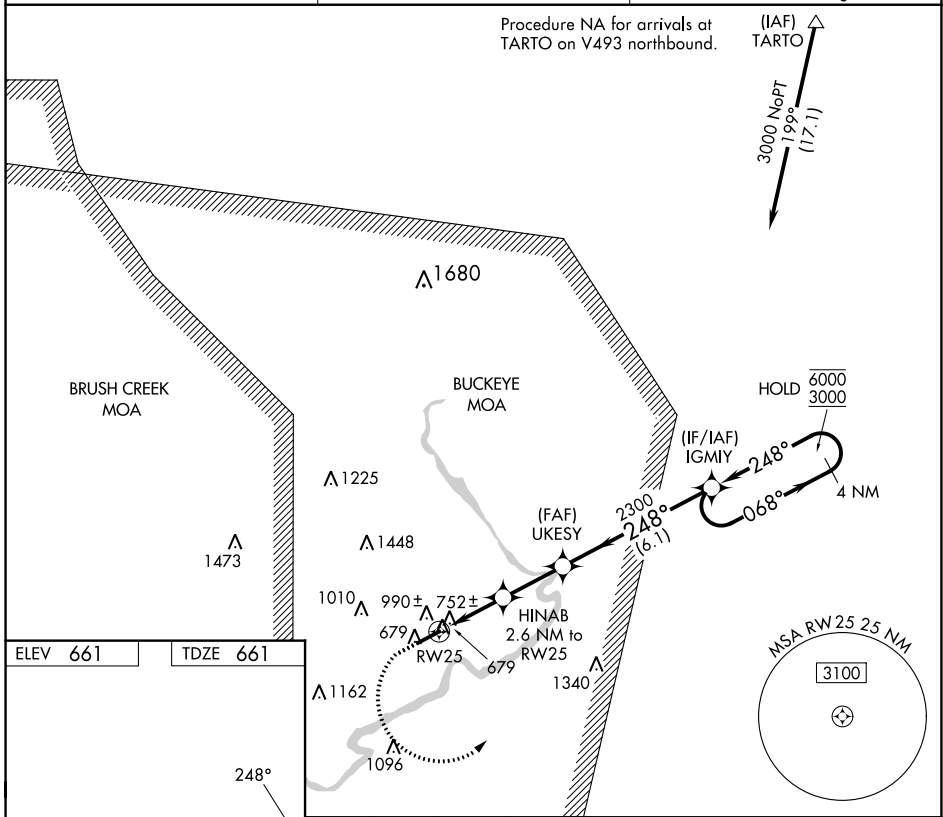
WAAS CH <b>97537</b> <b>W25A</b>	APP CRS <b>248°</b>	Rwy Idg TDZE <b>661</b> Apt Elev <b>661</b>	<b>4899</b> <b>661</b> <b>661</b>
--	------------------------	---	---

# RNAV (GPS) RWY 25

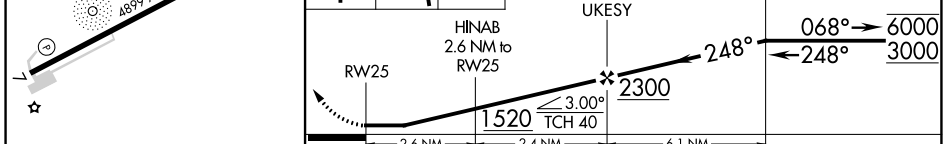
PIKE COUNTY (EOP)

RNP APCH - GPS.		MISSED APPROACH: Climb to 1120 then climbing left turn to 3000 direct IGMiy and hold.
<p>▼ Rwy 25 helicopter visibility reduction below 3/4 SM NA.</p> <p>▲ NA Circling Rwy 7 NA at night.</p> <p>When local altimeter setting not received, use PMH altimeter setting.</p>		

AWOS-3PT <b>121.45</b>	INDIANAPOLIS CENTER <b>135.575 290.5</b>	UNICOM <b>123.0 (CTAF) 0</b>
---------------------------	---	---------------------------------



ELEV 661	TDZE 661			
1120	3000	IGMiy	VGSi and descent angles not coincident (VGSi Angle 3.00/TCH 25).	
			4 NM Holding Pattern	



CATEGORY		A	B	C	D
LP	MDA	1060-1	399 (400-1)	1060-1 1/8	399 (400-1 1/8)
LNAV	MDA	1260-1	599 (600-1)	1260-1 3/4	599 (600-1 3/4)
CIRCLING		1500-1 1/4	1520-1 1/4	1580-2 3/4	1700-3
		839 (900-1 1/4)	859 (900-1 1/4)	919 (1000-2 3/4)	1039 (1100-3)

REIL Rwy 7 and 25 0

MIRL Rwy 7-25 0

WAVERLY, OHIO

Amdt 1C 05SEP24

39°10'N-82°56'W

# RNAV (GPS) RWY 25

PIKE COUNTY (EOP)

EC-2, 28 NOV 2024 to 26 DEC 2024

EC-2, 28 NOV 2024 to 26 DEC 2024