

WAAS CH 70537 W19A	APP CRS 207°	Rwy Idg TDZE 5286 Apt Elev 5318	7100
--	------------------------	---	-------------

RNAV (GPS) RWY 19

RICHFIELD MUNI (RIF')

RNP APCH-GPS.

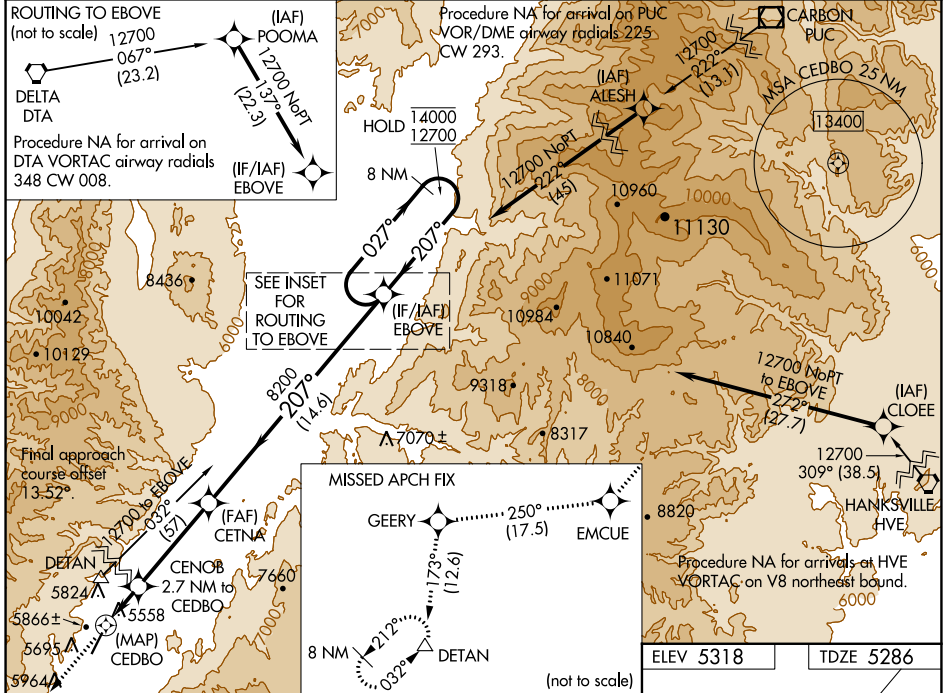
NA Rwy 19 helicopter visibility reduction below 3/4 SM NA. When local altimeter setting not received, procedure NA.

MISSED APPROACH: Climb to 12000 direct EMCUE, and track 250° to GEERY, and track 173° to DETAN and hold.

*Missed approach requires minimum climb of 380 feet per NM to 9600.

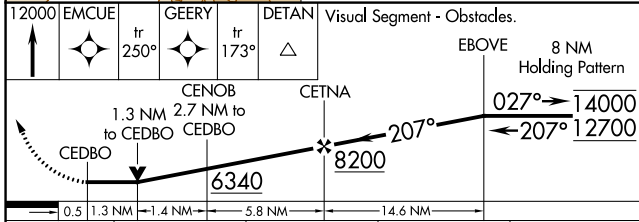
#Missed approach requires minimum climb of 390 feet per NM to 9600.

AWOS-3 133.375	SALT LAKE CITY CENTER 125.575 379.275	UNICOM 122.8 (CTAF) 0
--------------------------	---	---------------------------------

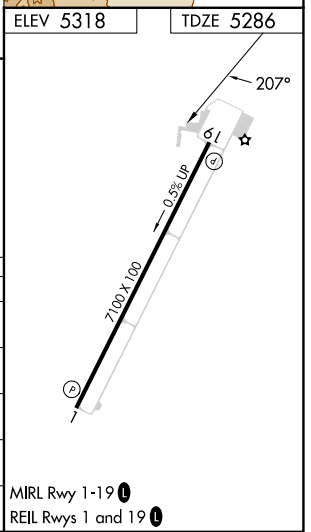


SW-4, 28 NOV 2024 to 26 DEC 2024

SW-4, 28 NOV 2024 to 26 DEC 2024



CATEGORY	A	B	C	D
LP MDA*	5880-1	594 (600-1)	5880-1 3/4 594 (600-1 3/4)	NA
LP MDA	7340-1 1/4 2054 (2100-1 1/4)	7340-1 1/2 2054 (2100-1 1/2)	7340-3 2054 (2100-3)	NA
LNAV MDA#	6340-1 1/4 1054 (1100-1 1/4)	6340-1 1/2 1054 (1100-1 1/2)	6340-3 1054 (1100-3)	NA
LNAV MDA	7440-1 1/4 2154 (2200-1 1/4)	7440-1 1/2 2154 (2200-1 1/2)	7440-3 2154 (2200-3)	NA
CIRCLING	7440-1 1/4 2122 (2200-1 1/4)	7440-1 1/2 2122 (2200-1 1/2)	7440-3 2122 (2200-3)	NA



MIRL Rwy 1-19 0
REIL Rws 1 and 19 0