

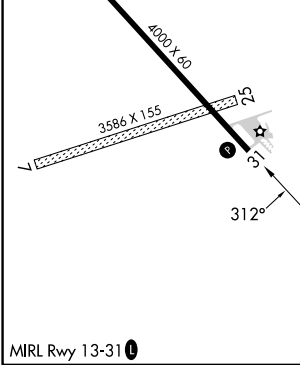
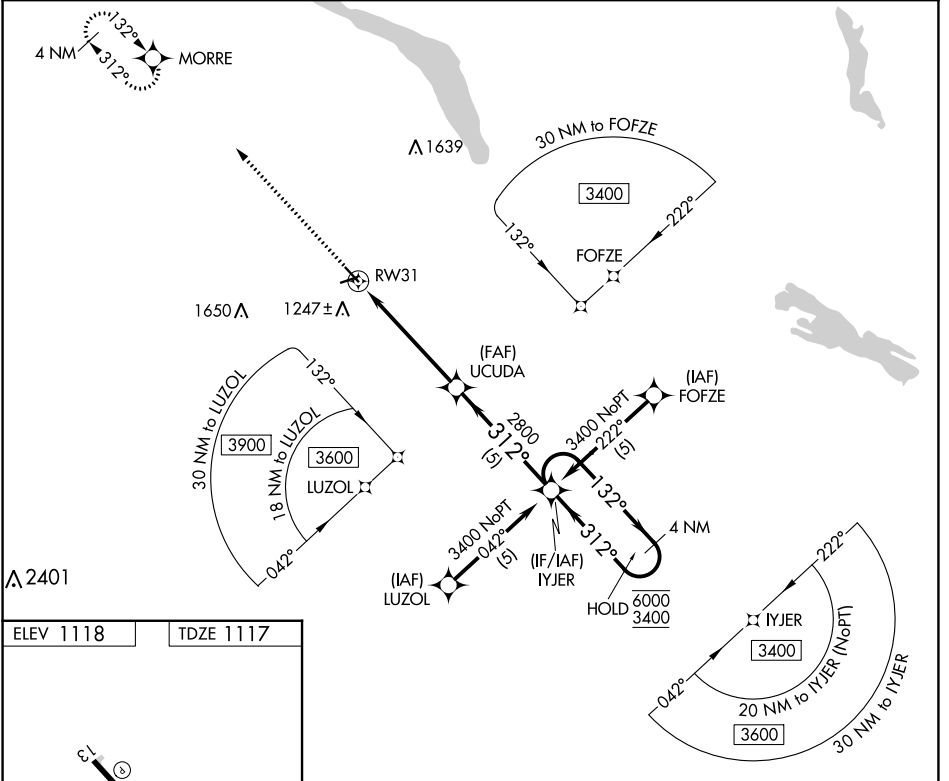
APP CRS	Rwy Idg	<b>4000</b>
<b>312°</b>	TDZE	<b>1117</b>
	Apt Elev	<b>1118</b>

# RNAV (GPS) RWY 31

MILBANK MUNI (1D1)

RNP APCH - GPS.	MISSED APPROACH: Climb to 3400 direct MORRE and hold.
Rwy 31 helicopter visibility reduction below 3/4 SM NA. Circling Rwy 7, 25 NA. When local altimeter setting not received, use Ortonville altimeter setting and increase all MDAs 20 feet. VDP NA when using Ortonville Muni/Martinson Fld altimeter setting.	

AWOS-3P <b>118.9</b>	MINNEAPOLIS CENTER <b>128.5 306.2</b>	AUNICOM <b>122.8 (CTAF) 0</b>
-------------------------	--	----------------------------------



ELEV 1118	TDZE 1117			
Visual Segment - Obstacles.				
3400 MORRE	UCUDA			
1.8 NM to RW31	IYJER 4 NM Holding Pattern			
1.8 NM	3.4 NM			
1.8 NM	5 NM			
132° → 6000 ← 312° 3400				
CATEGORY	A	B	C	D
LNAV MDA	1720-1	603 (700-1)	NA	
CIRCLING	1720-1	602 (700-1)	NA	

NC-1, 28 NOV 2024 to 26 DEC 2024

NC-1, 28 NOV 2024 to 26 DEC 2024