

| | | | |
|--|------------------------|-----------------------------|---|
| WAAS CH 82418 W18A | APP CRS 186° | Rwy Idg TDZE Apt Elev | 5700 6763 6763 |
|--|------------------------|-----------------------------|---|

RNAV (GPS) RWY 18

PANGUITCH MUNI (U55)

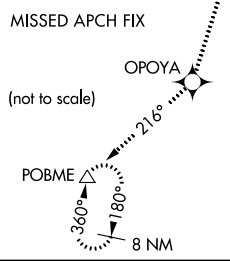
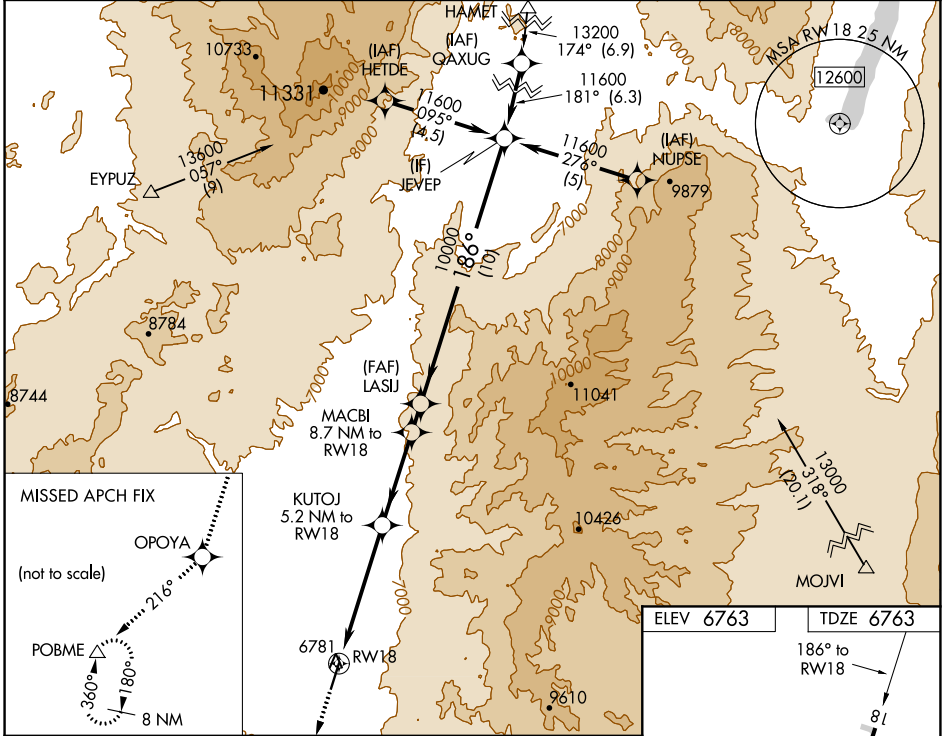
For uncompensated Baro-VNAV systems, LNAV/VNAV NA below -28°C (-18°F) or above 54°C (130°F). DME/DME RNP-0.3 NA. When local altimeter setting not received use Bryce Canyon altimeter setting and increase all DA 149 feet and all MDA 160 feet, increase LPV visibility 1/4 mile and increase LNAV visibility and Circling Cat B visibility 1/4 mile. Baro-VNAV and VDP NA with Bryce Canyon altimeter setting.

MISSED APPROACH: Climb to 12500 direct OPOYA and on track 216° to POBME and hold, continue climb-in-hold 12500.

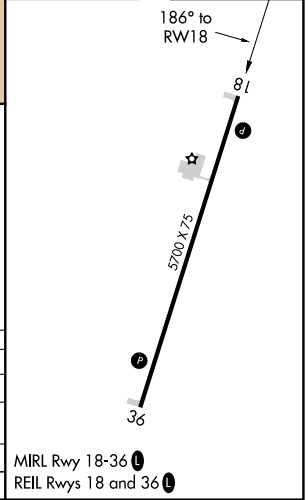
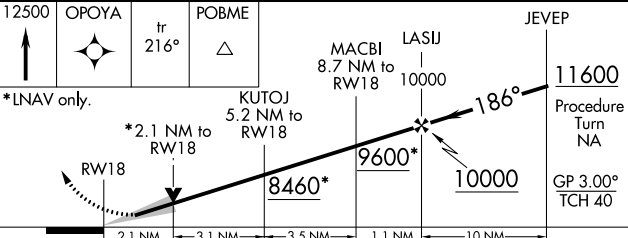
AWOS-3
133.125

SALT LAKE CENTER
133.6 269.25

CTAF
122.9



| | |
|-----------|-----------|
| ELEV 6763 | TDZE 6763 |
|-----------|-----------|



| CATEGORY | A | B | C | D |
|-------------------|--------|-------------|---|----|
| LPV DA | 6963-1 | 200 (200-1) | | NA |
| LNAV/VNAV DA | 7331-2 | 568 (600-2) | | NA |
| LNAV MDA | 7460-1 | 697 (700-1) | | NA |
| C CIRCLING | 7460-1 | 697 (700-1) | | NA |

MIRL Rwy 18-36
REIL Rwy 18 and 36

SW-4, 28 NOV 2024 to 26 DEC 2024

SW-4, 28 NOV 2024 to 26 DEC 2024