

APP CRS	Rwy Idg	<b>6027</b>
<b>227°</b>	TDZE	<b>2429</b>
	Apt Elev	<b>2454</b>

# RNAV (GPS) RWY 24

CALIFORNIA CITY MUNI (L71)

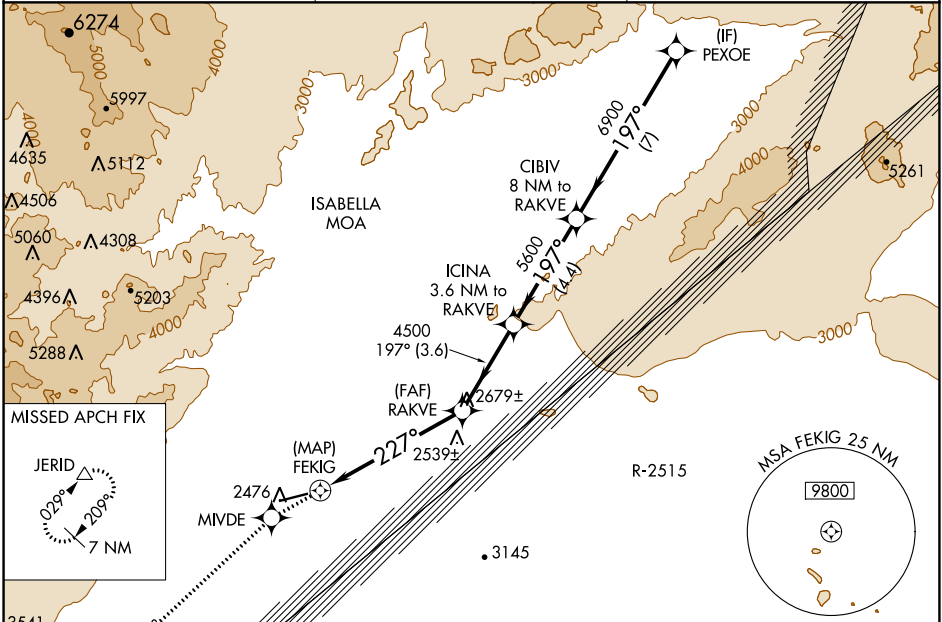
RNP APCH.  
 ▼ If local altimeter setting not received, use Edwards AFB altimeter setting and increase all MDAs 60 feet; if neither received, procedure not authorized.  
 ▲ NA

MISSED APPROACH: Climb to 9000 direct MIVDE and via 213° track to JERID and hold, continue climb-in-hold to 9000.

AWOS-1  
**120.875**

JOSHUA APP CON  
**133.65 348.7**

UNICOM  
**122.7 (CTAF)**



SW-3, 28 NOV 2024 to 26 DEC 2024

SW-3, 28 NOV 2024 to 26 DEC 2024

ELEV 2454 | TDZE 2429

**RADAR REQUIRED**

9000	MIVDE	JERID	VGSI and descent angles not coincident (VGSI Angle 3.00/TCH 40).	PEXOE
↑	◆	△		
	213° tr			
		ICINA 3.6 NM to RAKVE	CIBIV 8 NM to RAKVE	9000
		RAKVE		
		5600	6900	
	FEKIG			Procedure Turn NA
	≤ 3.05° TCH 50			
	227°	197°		
	0.5	5.8 NM	3.6 NM	4.4 NM
				7 NM

ELEV 2454	TDZE 2429
-----------	-----------

MRL Rwy 6-24  
REL Rwy 24

CATEGORY	A	B	C	D
LNAV MDA	2820-1 391 (400-1)			NA
CIRCLING	2960-1	506 (600-1)	3080-1¾ 626 (700-1¾)	NA