

APP CRS <b>047°</b>	Rwy Idg TDZE Apt Elev	<b>6027</b> <b>2454</b> <b>2454</b>
------------------------	-----------------------------	---

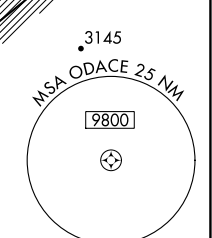
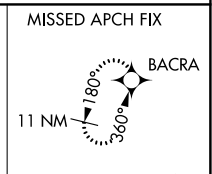
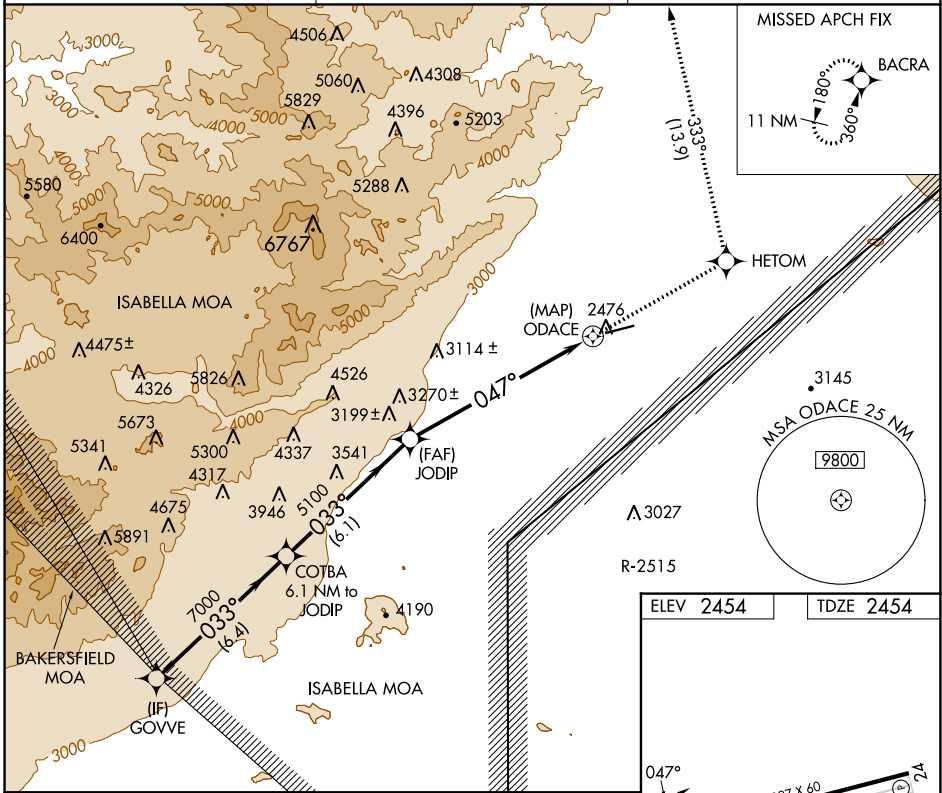
# RNAV (GPS) RWY 6

CALIFORNIA CITY MUNI (L71)

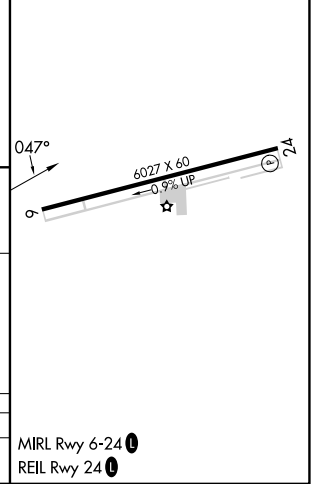
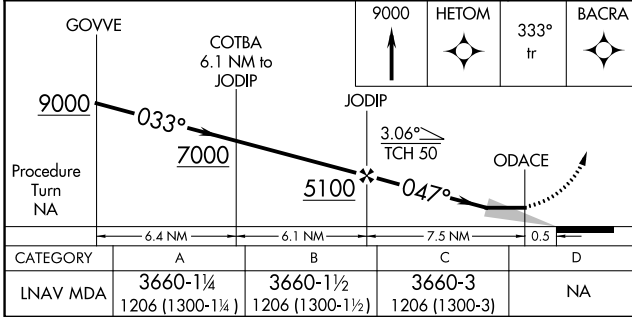
RNP APCH.  
RADAR required.  
▼ If local altimeter setting not received, use Edwards AFB altimeter setting and increase all MDAs 60 feet; if neither received, procedure not authorized.

MISSED APPROACH: Climb to 9000 direct HETOM and via 333° track to BACRA and hold, continue climb-in-hold to 9000.

AWOS-1 <b>120,875</b>	JOSHUA APP CON <b>133.65 348.7</b>	UNICOM <b>122.7 (CTAF)</b>
--------------------------	---------------------------------------	-------------------------------



ELEV 2454	TDZE 2454
-----------	-----------



SW-3, 28 NOV 2024 to 26 DEC 2024

SW-3, 28 NOV 2024 to 26 DEC 2024