

WAAS CH 61240 W09A	APP CRS 094°	Rwy Idg TDZE Apt Elev	4650 1459 1470
--	------------------------	-----------------------------	---

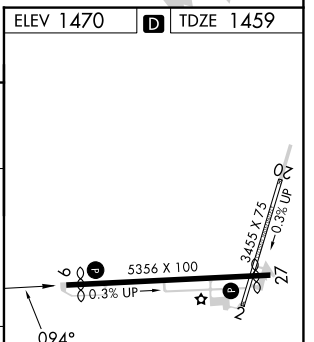
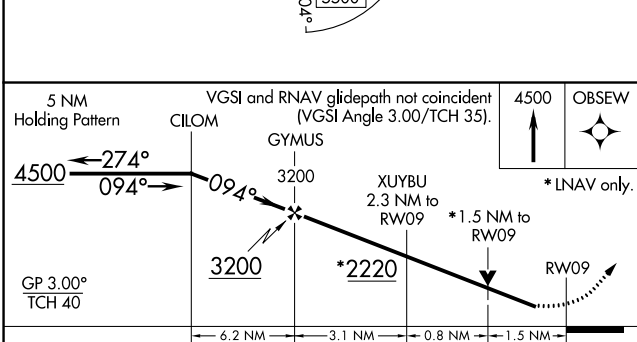
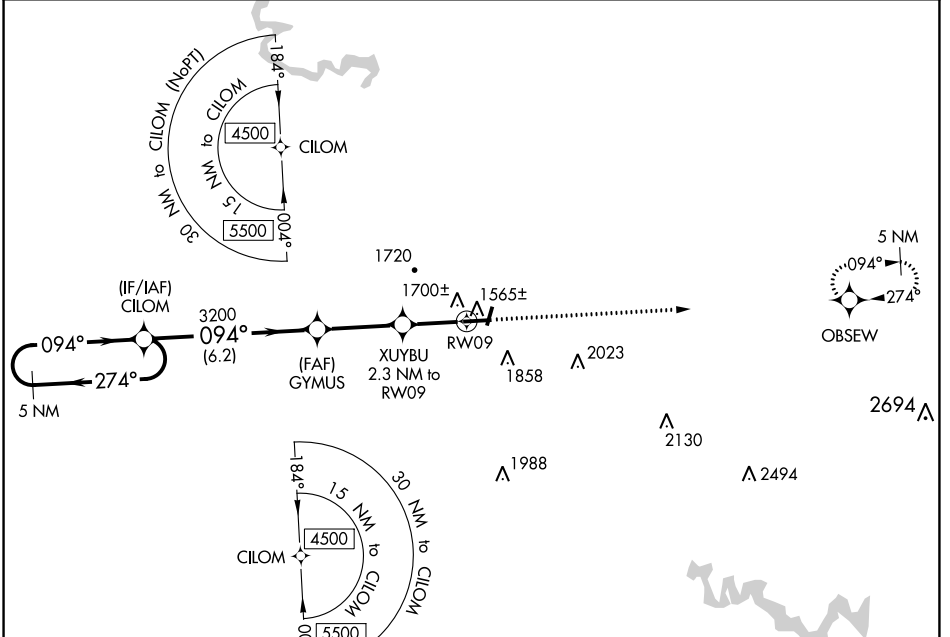
RNAV (GPS) RWY 9

PIKE COUNTY/HATCHER FLD (P.B.X)

⚠ For uncompensated Baro-VNAV systems, LNAV/VNAV NA below -17°C (0°F) or above 54°C (130°F). DME/DME RNP-0.3 NA. Rwy 9 helicopter visibility reduction below ¾ SM NA. Circling NA to Rws 2 and 20.

MISSED APPROACH: Climb to 4500 direct OBSEW and hold.

AWOS-3PT 121.225	INDIANAPOLIS CENTER 126.575 257.85	UNICOM 122.8 (CTAF) 📶
----------------------------	--	--



CATEGORY	A	B	C	D
LPV DA		1709-1	250 (300-1)	
LNAV/VNAV DA		1891-1½	432 (500-1½)	
LNAV MDA	1960-1	501 (500-1)	1960-1⅓	501 (500-1⅓)
📶 CIRCLING	2120-1 650 (700-1)	2160-1 690 (700-1)	2160-2 690 (700-2)	2460-3 990 (1000-3)

ELEV 1470 **D** TDZE 1459

HIRL Rwy 9-27 **📶**
REIL Rws 9 and 27 **📶**

SE-1, 28 NOV 2024 to 26 DEC 2024

SE-1, 28 NOV 2024 to 26 DEC 2024