

WAAS CH 42529 W29A	APP CRS 270°	Rwy ldg 3001 TDZE 18 Apt Elev 22
--	------------------------	---

RNAV (GPS) RWY 29

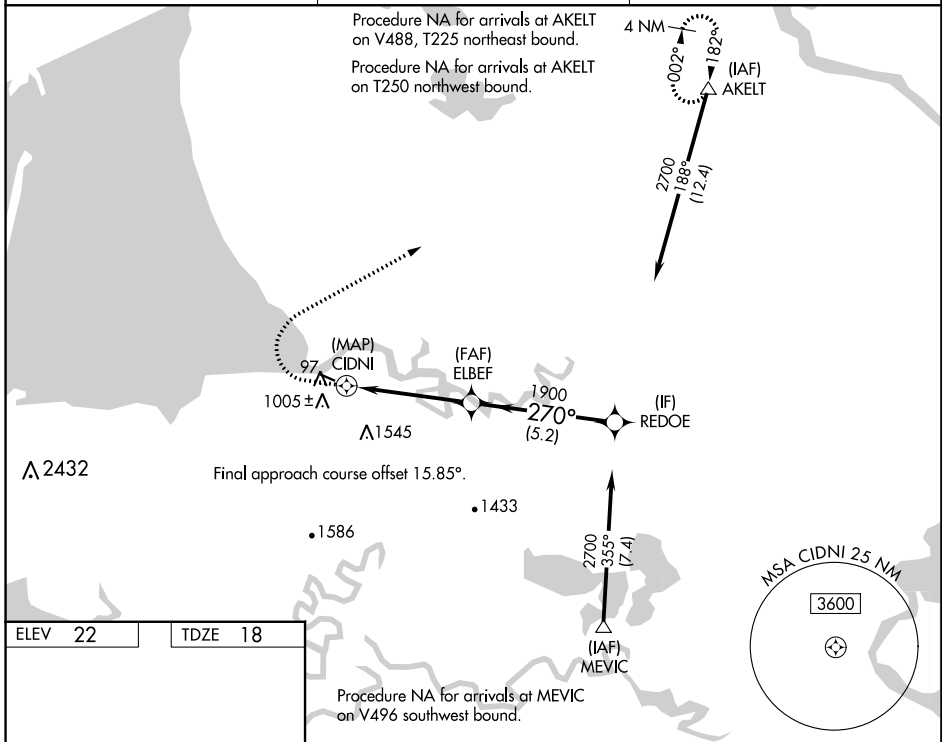
SCAMMON BAY (SCM) (PACM)

RNP APCH - GPS.

Circling NA south of Rwy 11-29. Rwy 29 helicopter visibility reduction below 1 SM NA. When local altimeter setting not received, use VAK/PAVA altimeter setting and increase all MDAs 60 feet. Straight-in and Circling Rwy 29 NA at night.

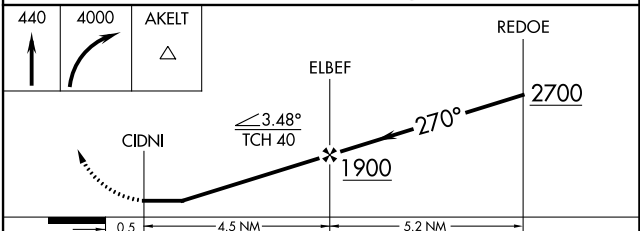
MISSED APPROACH: Climb to 440, then climbing right turn to 4000 direct AKELT and hold.

AWOS-3P 118.425	ANCHORAGE CENTER 124.5	UNICOM 123.0 (CTAF) 0
---------------------------	----------------------------------	---------------------------------



ELEV 22	TDZE 18
----------------	----------------

MIRL Rwy 11-29 0



CATEGORY		A	B	C	D
LP	MDA	900-1¼	882 (900-1¼)	NA	
LNAV	MDA	1100-1¼	1100-1½	NA	
		1082 (1100-1¼)	1082 (1100-1½)		
CIRCLING		1100-1¼	1100-1½	NA	
		1078 (1100-1¼)	1078 (1100-1½)		

AK, 31 OCT 2024 to 26 DEC 2024

AK, 31 OCT 2024 to 26 DEC 2024